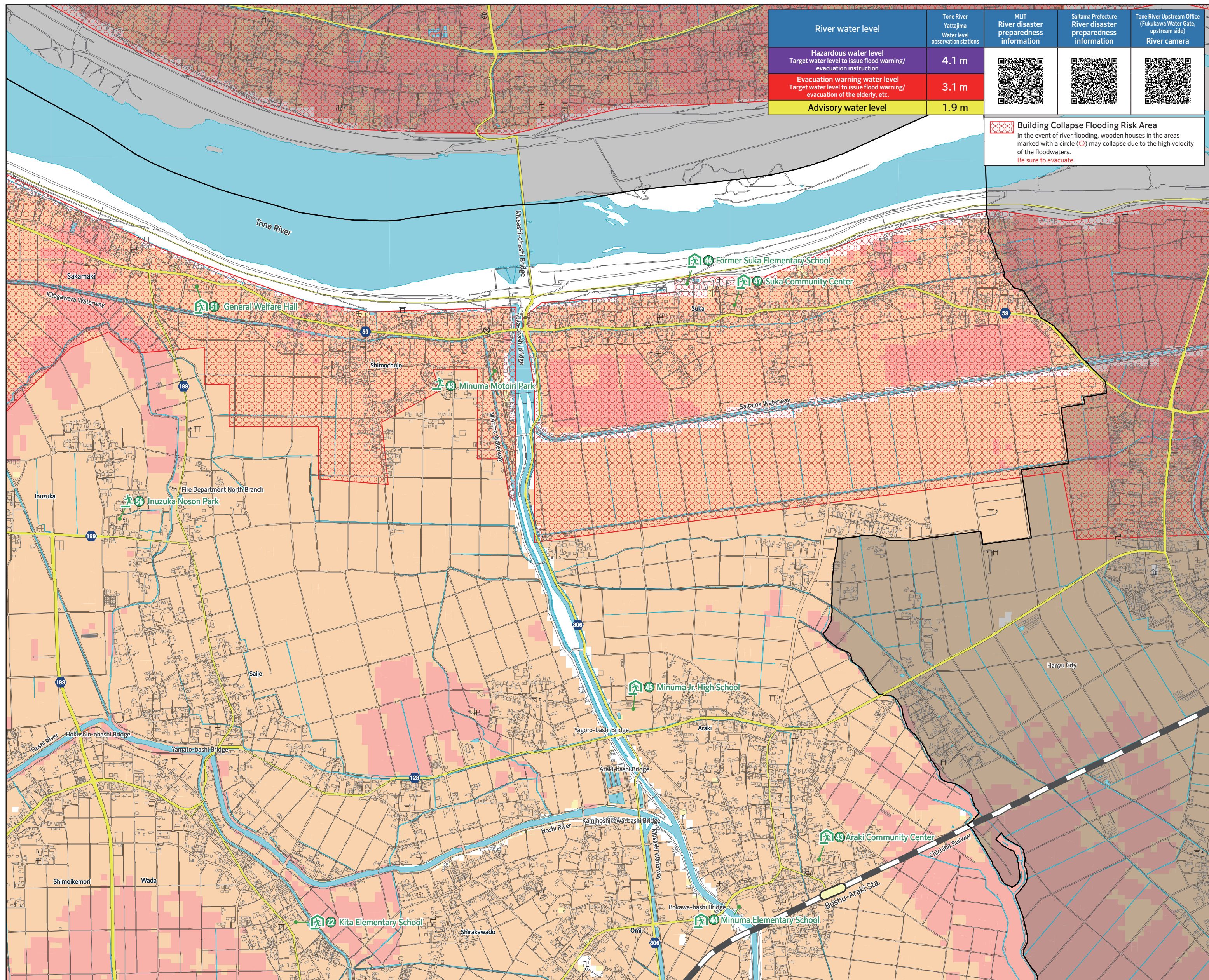
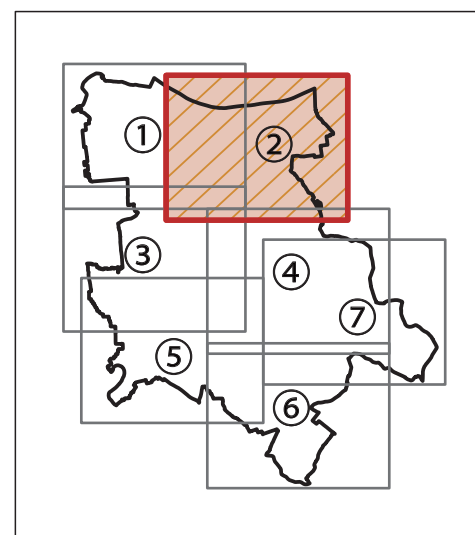
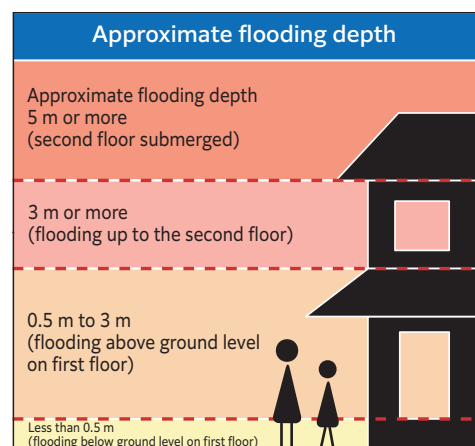


# Disaster Preparedness Map 2



Legend	
	Designated emergency evacuation sites
	Designated evacuation shelters
	Gyoda City boundary
	Stations
	Railroads
	National Route
	Prefectural roads
	Underpasses
	City office/branch offices
	Police department/police box
	Fire department
	Post office
	Museums
	Libraries
	Kindergartens
	Government offices
	Tax office
	Hospitals
	Nursing homes
	Temples
	Shrines



River water level	Tone River Yattajima Water level observation stations
<b>Hazardous water level</b> Target water level to issue flood warning/ evacuation instruction	<b>4.1 m</b>
<b>Evacuation warning water level</b> Target water level to issue flood warning/ evacuation of the elderly, etc.	<b>3.1 m</b>
<b>Advisory water level</b>	<b>1.9 m</b>

MLT River disaster preparedness information	Saitama Prefecture River disaster preparedness information	Tone River Upstream Office (Fukukawa Water Gate, upstream side) River camera

**Building Collapse Flooding Risk Area**  
In the event of river flooding, wooden houses in the areas marked with a circle (○) may collapse due to the high velocity of the floodwaters.  
**Be sure to evacuate.**



Approved by the director-general of the Geospatial Information Authority of Japan in accordance with the Survey Act (for use) R.3JHs.590