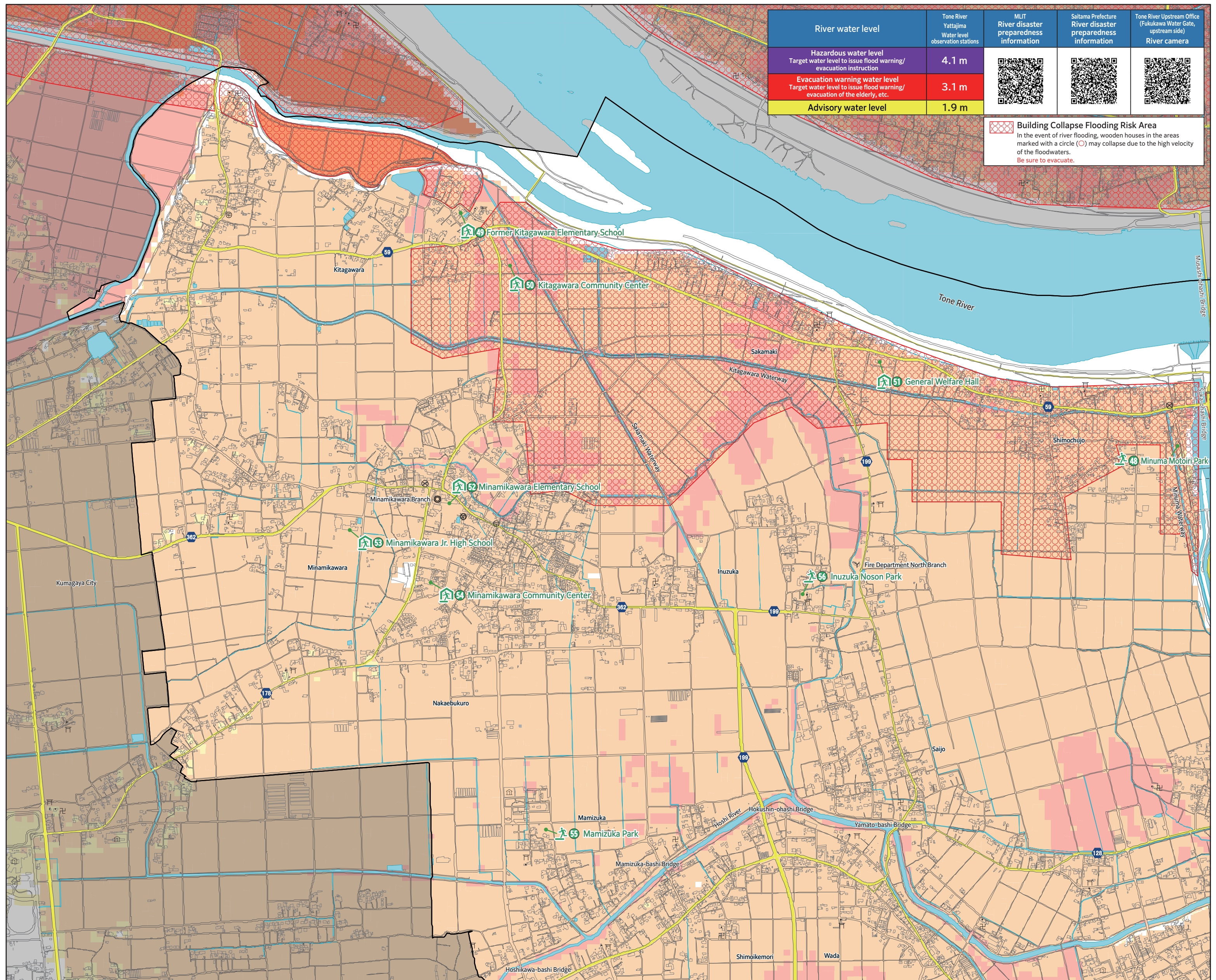
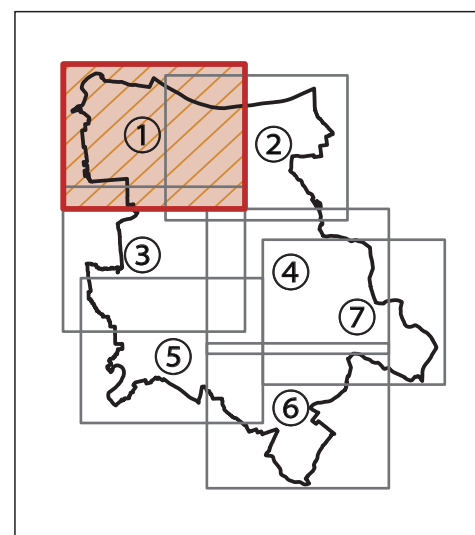
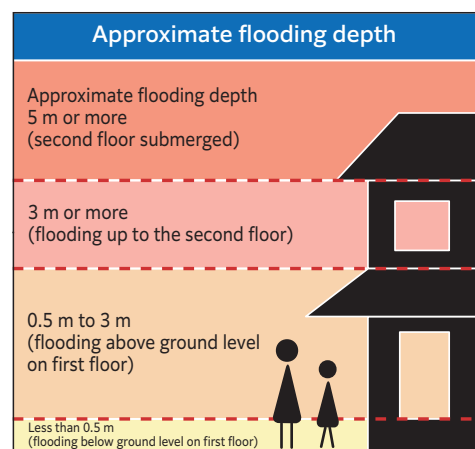


Disaster Preparedness Map 1



Legend	
	Designated emergency evacuation sites
	Designated evacuation shelters
	Gyoda City boundary
	Stations
	Railroads
	National Route
	Prefectural roads
	Underpasses
	City office/branch offices
	Police department/police box
	Fire department
	Post office
	Museums
	Libraries
	Kindergartens
	Government offices
	Tax office
	Hospitals
	Nursing homes
	Temples
	Shrines



River water level	Tone River Yattajima Water level observation stations	MLIT River disaster preparedness information	Saitama Prefecture River disaster preparedness information	Tone River Upstream Office (Fukukawa Water Gate, upstream side) River camera
Hazardous water level Target water level to issue flood warning/evacuation instruction	4.1 m			
Evacuation warning water level Target water level to issue flood warning/evacuation of the elderly, etc.	3.1 m			
Advisory water level	1.9 m			

Building Collapse Flooding Risk Area
In the event of river flooding, wooden houses in the areas marked with a circle (○) may collapse due to the high velocity of the floodwaters.
Be sure to evacuate.