

Evacuation Life

Choosing where to evacuate to

When a major disaster strikes, you will be forced into evacuation life at a safe location for an undetermined time.

At-home evacuation

If your building is safe and you can ensure your safety at home, we strongly recommend “at-home evacuation” so that you can remain in a familiar location. Evacuation shelters are places to go if you are unable to evacuate at home, so there is no need to go to one if it is not necessary. It is vital to stockpile drinking water and food at home.



Evacuating to a shelter

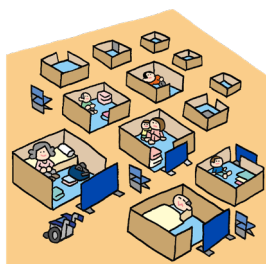
Living in an evacuation shelter can be inconvenient, and the stress can cause some people to fall ill. To minimize these difficulties, it is essential for all evacuees to follow the shelter's rules and to support each other while there.



Tips for shelter operation and life at a shelter

Follow all shelter rules while living there

- ◆ Observe the rules of communal living, such as waking and sleeping hours, restroom use, etc.
- ◆ Maintain a clean-living environment: put garbage out in designated areas, use toilets cleanly, and clean regularly



Households with seniors and people with disabilities

- ◆ Review the evacuation site in advance. Communicate with neighbors who can help you evacuate in the event of a disaster.
- ◆ Secure a living space in the shelter that is close to entrances and exits and toilets



Participate in shelter operations by sharing roles and responsibilities

- ◆ Evacuees should also assist with the operation of the shelter. Please share the responsibilities of cleaning, cooking, distributing supplies, and the like to the extent you can.



Households with pregnant women and the like

- ◆ Secure a location where you can change, breastfeed, change diapers and so on in privacy



Be careful about health management

- ◆ Move around regularly to prevent deep-vein thrombosis
- ◆ Dehydration causes many physical problems. Be sure to hydrate regularly, without worrying about how often you have to go to the bathroom.



If you have food allergies

- ◆ Stockpile food that you can eat on a daily basis
- ◆ Devise a way to easily inform people of your allergy/allergies



Take thorough measures to prevent infection

- ◆ Wear a mask and wash your hands thoroughly
- ◆ Disinfect your hands with alcohol sanitizer, and regularly disinfect handrails, doorknobs and other places that many people touch
- ◆ Ventilate your space regularly
- ◆ Have people with a fever or other symptoms stay in a dedicated space



Evacuating with pets

- ◆ There may be people at the shelter who do not like animals or are allergic. Keep pets in cages and manage them at the dedicated space.
- ◆ Make sure your pet is accustomed to staying in a cage, and provide basic training, including potty training
- ◆ You must provide cages, pet food, and other supplies for your pet. Owners are responsible for the care and feeding of their pets.
- ◆ The Gyoda City website also offers information about evacuating with pets



Be aware of criminal activities

- ◆ Shelters should be operated with a high awareness of crime prevention. Create an environment that deters crime by patrolling and guarding sleeping areas and dedicated spaces.



Evacuee Card

When you enter an evacuation shelter, you must fill out an “evacuee card” at the reception desk. This is used to keep track of evacuees, confirm their safety, and distribute supplies. Filling out evacuee cards in advance will help ensure smoother evacuation life.

You can also download an evacuee card from the Gyoda City website.



Evacuee Card

避難者カード

- The head of your household should fill out an evacuee card when entering a shelter.
避難所への入所時に、世帯代表の方が記入してください。

①	Residents' association name 自治会名			
②	Names, etc. 氏名等	Name and <i>furigana</i> (ふりがな) 氏名	Age 年齢	Remarks (special considerations, etc.) 備考 (特別な配慮等)
③	Address 住所			
④	Telephone number 電話番号	Representative cellphone number: 代表者携帯:		
⑤	Situation of home Circle (○) the answer(s) to the best of your knowledge 家屋の状況 わかるものに○	Totally collapsed / Partially collapsed / Partially damaged 全壊・半壊・一部損壊	Livable (Yes / No) 居住の可否 (可・否)	
		Flooding above floor level / Flooding below floor level 床上浸水・床下浸水	Water cut off / Power outage / Gas cut off 断水・停電・ガス停止	
⑥	Emergency contact information 緊急連絡先			
⑦	Special remarks 特記事項	Please indicate any qualifications you have (nurse, disaster prevention specialist, etc.) that would be useful at the shelter as well as any other requests you have. 避難所運営において役に立つ資格 (看護師、防災士等)、その他要望等があれば記入してください。		
⑧	May we disclose information to inquire about your safety? 安否の問い合わせに情報を公開してもよいですか。			Yes / No はい・いいえ

※ To be filled out by the operation committee
※ 以下は運営委員会で記載します。

Evacuee Card No. 避難者カード No.	Date of leaving: 退所年月日	New address and contact information 転居先と連絡先
	Year Month Day 年 月 日	New address: 転出先 Tel: 電話

◆ Make a copy of your completed evacuee card. After that, cut it out along the dotted line and store it with your emergency supplies.

List of evacuation sites/shelters



Designated emergency evacuation sites

Places to evacuate to protect lives in the event of a disaster or when a disaster threatens

No.	Facility name	Address	Earth- quakes	Floods		Area
				Tone River	Arakawa River	
1	Oshi Elementary School	7-20 Honmaru	○	△	△	B-3
2	Oshi Jr. High School	18-6 Honmaru	○	△	△	B-3
3	City Office parking lot	2-5 Honmaru	○			B-3
4	Oshijo Bus Terminal	3-5 Honmaru	○			B-3
5	Industry and Culture Hall parking lot	2-20 Honmaru	○			B-3
6	Commerce and Industry Center	2-1-8 Oshi	○	△	△	B-3
7	Community Center Mizushiro	5-10 Honmaru	○	△	△	B-3
8	Chuo Children's Park	6-1 Chuo	○			B-3
9	Minami Elementary School	1-25-4 Sama	○	△	△	B-3
10	Community Center Mizushiro Annex	5-3 Mukaimachi	○			B-3
11	Gyoda Jr. High School	3-3-8 Sama	○	△	△	B-3
12	Oshi/Gyoda Community Center	1-22-11 Sama	○			B-3
13	Sama Community Center	3-1-37 Sama	○	△	△	B-3
14	Silver Employment Center	13-24 Asahicho	○			B-3
15	Gender Equality Promotion Center	3-23-6 Sama	○	△	△	B-3
16	Mukaimachi Park	7 Mukaimachi	○			B-3
17	Mochida Community Center	5-9-26 Josai	○	△	△	A-3
18	Nishi Elementary School	3-5-9 Mochida	○	△	△	A-3
19	Nishi Jr. High School	600 Mochida	○	○	△	A-3
20	Josai Park	3-14 Josai	○			A-3
21	Hoshikawa Community Center	2082 Yago	○	△	○	B-2
22	Kita Elementary School	94-1 Wada	○	△	○	B-2
23	Prefectural Shinshukan High School	1320 Nagano	○	△	○	B-2
24	General Gymnasium	1242 Wada	○	△	○	B-2
25	General Park	1165 Wada	○			B-2
26	Oi Community Center	1-58-10 Tanadacho	○	△		A-3
27	Izumi Elementary School	70 Mochida	○	△	△	A-3
28	Kadoi Baseball Field	2-23 Kadoicho	○			A-3
29	Shimizuchō Park	11 Shimizuchō	○			A-4
30	Tsurudoi Park	3-8 Kadoicho	○			A-3
31	Ichiriyama Park	1-51 Ichiriyamacho	○			A-4
32	Tanada Chuo Park	1-2 Tanadacho	○			A-3
33	Higashi Elementary School	2-26-8 Nagano	○	△	△	B-3
34	Nagano Jr. High School	2-1-55 Sakuracho	○	△	○	B-2
35	Prefectural Shinshukan High School (former Kogyo High School)	1354 Nagano	○	△	○	B-2
36	Sakuragaoka Elementary School	1880 Nagano	○	△	○	B-2



Designated evacuation shelters

Facilities for evacuees, including those whose residences were damaged by the disaster, to temporarily live in*1 *2

No.	Facility name	Address	Earth- quakes	Floods		Area
				Tone River	Arakawa River	
37	Sakuragaoka Community Center	1812-1 Nagano	○			B-2
38	Nagano Community Center	1-4-8 Nagano	○	△	○	B-3
39	Prefectural Gyoda Special Education School	4235 Nagano	○	△	△	B-3
40	Prefectural General Education Center	2-24 Fujimicho	○	△	○	B-2
41	Fujimi Park	1-15 Fujimicho	○			C-3
42	Fujimi Children's Traffic Park	2-9 Fujimicho	○			B-2
43	Araki Community Center	1111 Araki	○		○	C-2
44	Minuma Elementary School	1606 Araki	○	△	○	C-2
45	Minuma Jr. High School	4892 Araki	○	△	○	C-2
46	Former Suka Elementary School	4586 Suka	○	○	○	C-1
47	Suka Community Center	4650-2 Suka	○	△	○	C-1
48	Minuma Motoiri Park	3792 Suka	○			B-1
49	Former Kitagawara Elementary School	1517 Kitagawara	○	△	○	A-1
50	Kitagawara Community Center	1378 Kitagawara	○		○	A-1
51	General Welfare Hall	1737-1 Sakamaki	○	△	○	B-1
52	Minamikawara Elementary School	782 Minamikawara	○	△	○	A-1
53	Minamikawara Jr. High School	1081 Minamikawara	○	△	○	A-1
54	Minamikawara Community Center	869 Minamikawara	○		○	A-1
55	Mamizuka Park	540-1 Mamizuka	○			A-2
56	Inuzuka Noson Park	1460 Inuzuka	○			B-1
57	Sakitama Elementary School	4610-2 Sakitama	○	○	△	C-4
58	Sakitama Jr. High School	4143-1 Sakitama	○	○	△	C-4
59	Sakitama Community Center	4600 Sakitama	○	△	△	C-4
60	Sakitama Kofun Park	4834 Sakitama	○			B-3
61	Former Hoshimiya Elementary School	47 Kamiikemori	○	△	△	A-2
62	Hoshimiya Community Center	46 Kamiikemori	○			A-2
63	Shimooshi Elementary School	2451 Shimooshi	○	△	△	B-3
64	Shimooshi Community Center	214 Hinoue	○			B-3
65	Ota Community Center	971 Shimosudo	○	△	○	C-3
66	Ota-Nishi Elementary School	3521 Kobari	○	△	○	C-3
67	Ota-Higashi Elementary School	955 Manaita	○	△	○	D-3
68	Ota Jr. High School	1164-1 Shimosudo	○	△	○	C-3
69	Community Culture Center	1173-2 Manaita	○		○	D-3
70	Community Exchange Center	629 Shimosudo	○		○	D-2
71	Kodai Hasu-no-Sato	2375-1 Kobari	○			C-3
72	Suijo Park	Suijo Park	○			B-3

Notes: 1. Designated evacuation shelters open depending on the state of the disaster, so not all facilities will be open at the same time.

Please check the information Gyoda City disseminates regarding which facilities are open.

2. In Gyoda City, designated evacuation shelters also act as designated emergency evacuation sites.

○: Available

△: Second floor and above available

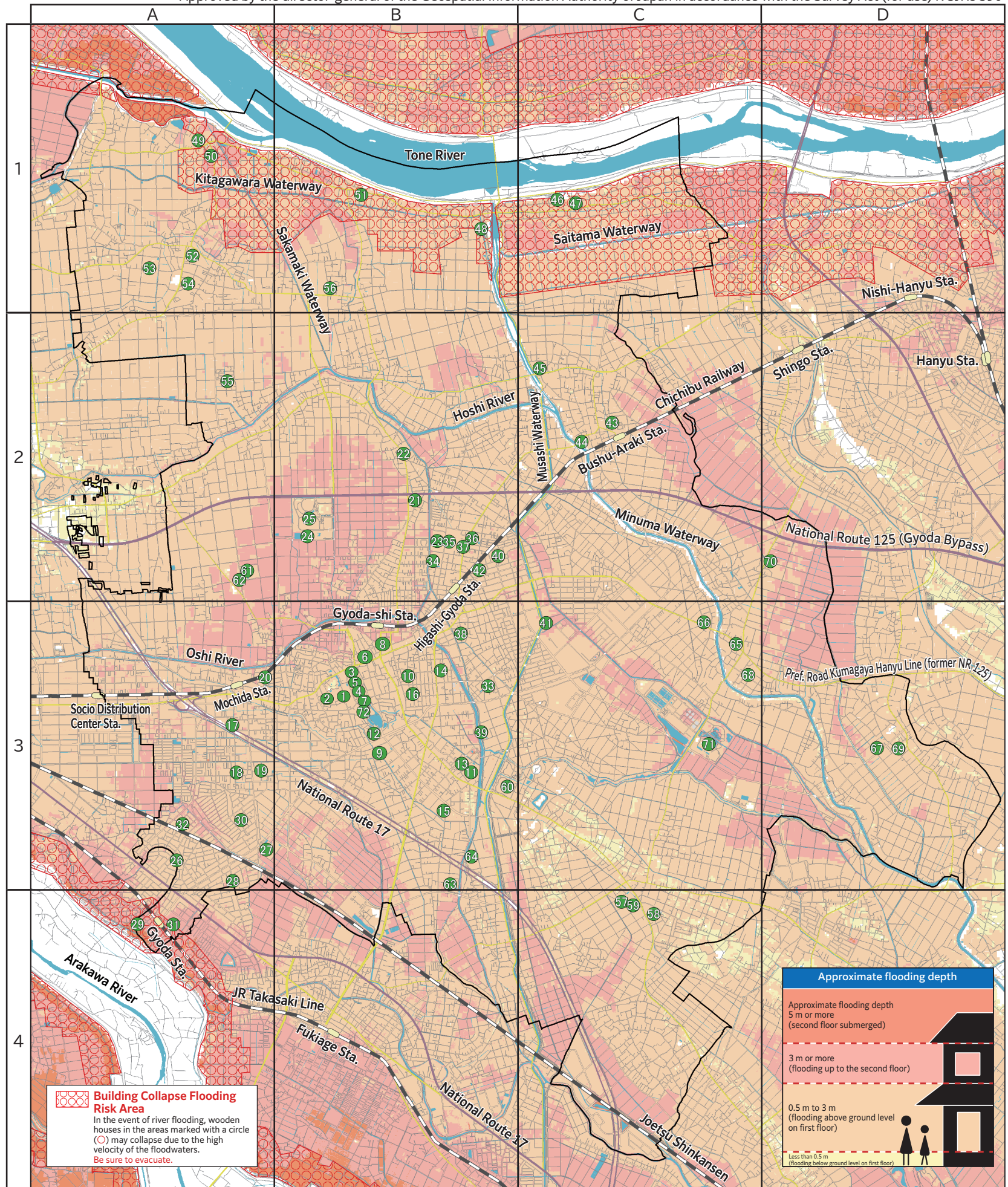
Expected flooding area map

This map shows the extent and depth of flooding if the Arakawa, Tone, Koyama, Fuku, Karasawa, Oshi and Hoshi rivers all overflow according to the maximum expected rainfall (a scale that only occurs approximately every thousand years) announced by the national and prefectural governments.

To be prepared for flooding emergencies, check the predicted depth of flooding around your home, workplace and other places where you usually are. Please also confirm your evacuation route to the nearest designated evacuation site or evacuation shelter.

It is also important to actually walk the evacuation route to check for any areas that may become dangerous if a disaster occurs.

Approved by the director-general of the Geospatial Information Authority of Japan in accordance with the Survey Act (for use) R 3JHs 590



This expected flooding area map was created based on a simulation of the maximum expected rainfall. However, please note that the actual areas and depth of flooding may differ if it rains even more than the maximum simulated amount.