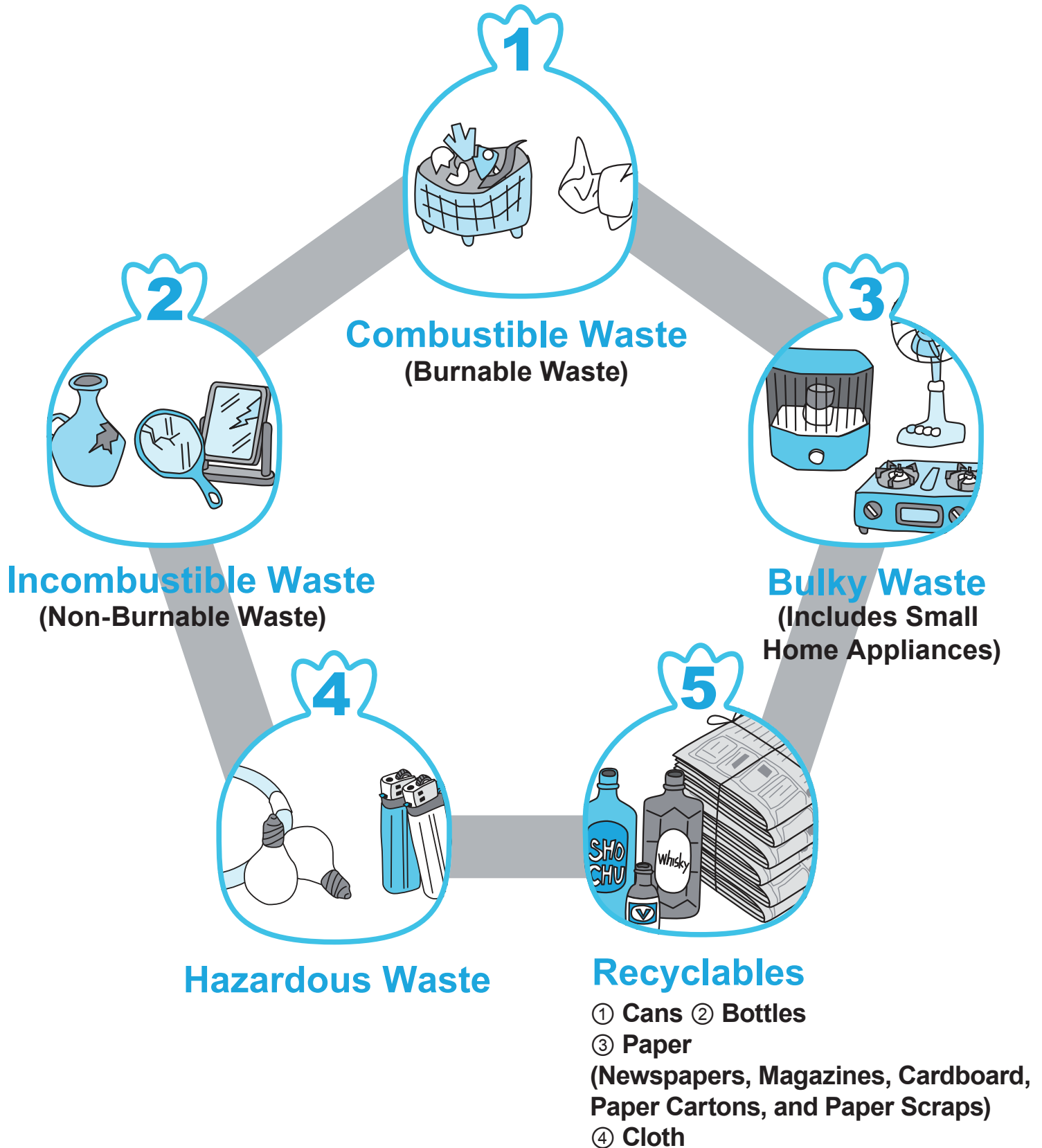


Waste Sorting

Manual



There are five categories of waste sorting.



When Taking Out Waste & Recyclables

①
**On the
designated
day**

②
By 8:30 AM

③
**In the place designated
by your district (Sanita-
tion Association)**

Please take it out...

- ◆ Do NOT put waste out the day before or during the night, as this may lead to illegal dumping, arson, theft, or other illegal activities.
- ◆ Check collection days in the "List of Collection Days by District" (pages 13 - 17).
- ◆ Waste Collection Sites are places only residents of the district may use. All residents using the Collection Site are asked to follow the rules and help manage them properly.
- ◆ In particular, be sure to adhere to the following rules to keep the Waste Collection Site clean.

○ **Waste**

Putting out damp waste or strong odors on days other than the designated collection day causes the waste collection site to get dirty and is also troublesome for people in the neighborhood.

○ **Recyclables**

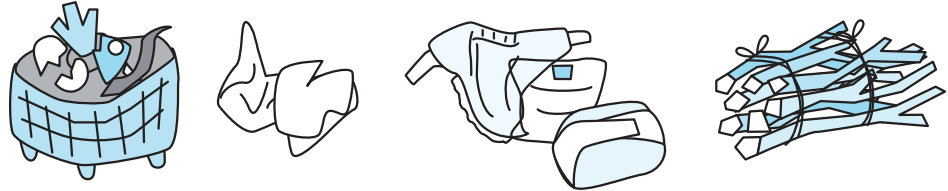
Putting out bottles and cans without rinsing them can cause bad odors. This is troublesome to people in the neighborhood and those on waste collection duty, so please be sure to rinse these lightly before putting them out.

*Waste that is not disposed of properly according to the rules (e.g., combustible waste in a plastic bag) will not be collected, and a sticker explaining the reason why will be placed on it. If this happens, please follow the rules and dispose of the waste again on the designated collection day.

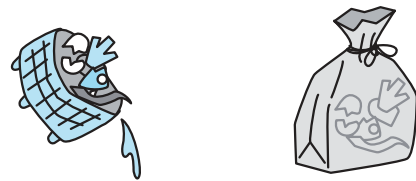
Disposing of Household Waste

Combustible Waste (Burnable Waste)

Kitchen waste, paper scraps, disposable diapers, wood and branches, etc.



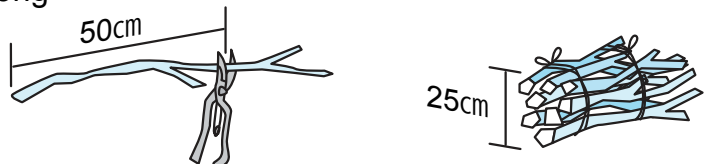
- ◆ Drain water from kitchen waste, place it in a paper bag, and tie it shut. (No designated bag.)



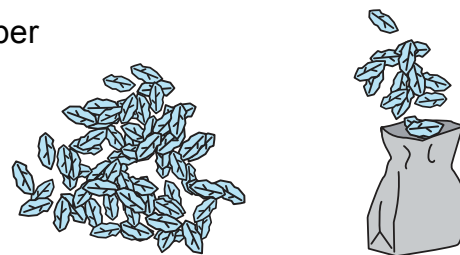
- ◆ Always be sure to remove waste from disposable diapers.



- ◆ Create bundles of wood and branches (less than 5 cm in diameter) about 50 cm long with a diameter of about 25 cm.



- ◆ Place grass clippings and fallen leaves in a paper bag. (Limited to small amounts.)



*Put out wrapping paper, snack boxes, envelopes, memo paper, and other scrap paper with Recyclables.

*For wood and branches (less than 5 cm in diameter), first contact Kobari Clean Center to check the length and other details before creating bundles, then bring the bundles directly to the center.

*Bring large amounts of grass clippings and fallen leaves directly to the Kobari Clean Center.

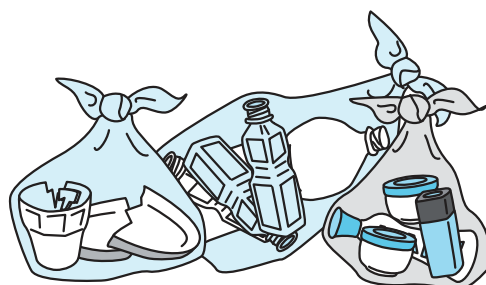
Disposing of Household Waste

Incombustible Waste (Non-Burnable)

Metal, glass, ceramics, plastics, vinyl, PET bottles, polystyrene foam, etc.



- ◆ Place in a plastic bag and tie it shut.
(No designated bag.)



- ◆ Place broken items, shaving razors, nails, needles, or any other sharp objects into a bottle or can, or wrap in several layers of paper, etc., then write the name of the contents (e.g. “knife, razor blade”) clearly on the front.



*Leather, fleece, down, vinyl, and synthetic fibers are to be disposed of with Bulky Waste.



*Put disposable lighters out with Hazardous Waste.

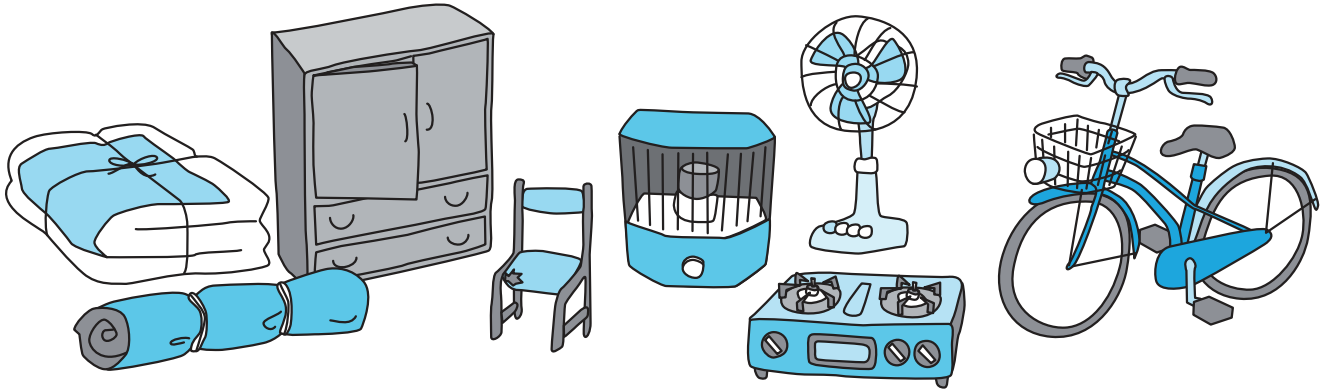
*For spray cans, use all contents and make a hole in the can, then put out with Recyclables.

*Objects larger than a plastic kerosene container (18L) are to be put out with Bulky Waste.

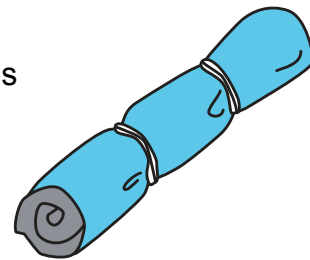
Disposing of Household Waste

Bulky Waste (Includes Small Home Appliances)

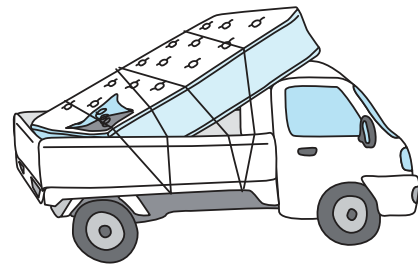
Bedding, furniture, electrical appliances, etc.



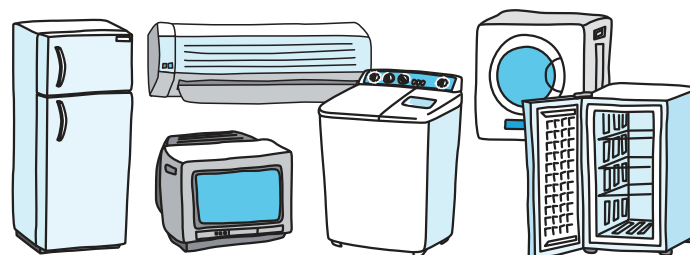
- ◆ Fold comforters, blankets, rugs, carpets, and curtains as small as possible and bind with string before putting out.



- ◆ Spring mattresses are to be taken directly to the Bulky Waste Processing Plant.
(They will not be collected at Waste Collection Sites.)



*Items that fall under the Home Appliance Recycling Act cannot be put out as waste.
(For how to process these items, see page 10.)

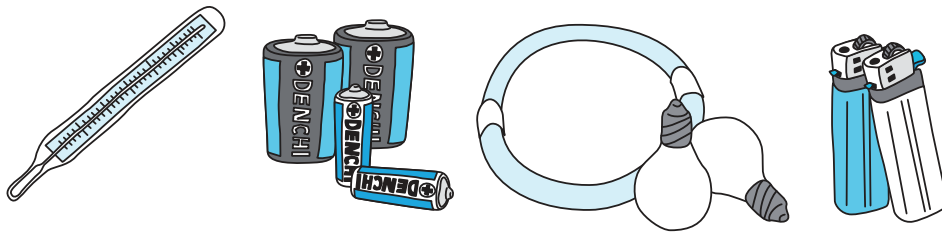


***Remove fluorescent light bulbs from lighting equipment and put out as Hazardous Waste.**

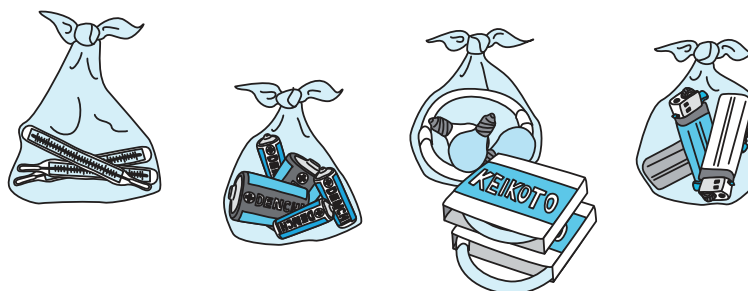
Disposing of Household Waste

Hazardous Waste

Dry cell batteries, fluorescent lights, fluorescent tubes, light bulbs, thermometers, disposable lighters, etc.



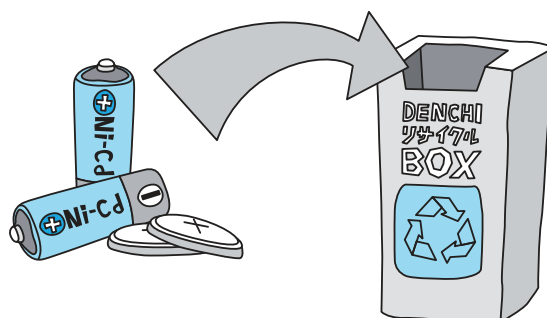
- ◆ Sort by category and place it in a plastic bag.
(Fluorescent tubes can also be placed in their original box to prevent breaking.)
- ◆ Use up all the gas in disposable lighters before disposing of them.



*Do not mix with Incombustible Waste (Non-Burnable Waste).

*Fluorescent lamps, fluorescent tubes, light bulbs, and thermometers are recycled after collection.

*Whenever possible, please recycle rechargeable batteries such as nickel-cadmium batteries, nickel-hydrogen batteries, lithium-ion batteries, and button batteries at stores and dealers.



Disposing of Household Waste

Recyclables

Cans, bottles, paper, cloth, etc.



◆ Cans (aluminum or steel cans for food or drink)

*Rinse with water before disposing of them.

*Sort aluminum cans from steel cans and place in the designated container.

*Oil cans, paint cans, and cans that remain dirty even after washing are to be disposed of as Incombustible (Non-Burnable) Waste.
(Do not put out items with their contents still inside.)



◆ Bottles (glass bottles for food or drink)

*Remove the cap and rinse with water before disposing of them.
Put caps out with Incombustible (Non-Burnable) Waste.

*Medicine bottles are to be put out with Incombustible (Non-Burnable) Waste.

*Sort Refillable Bottles from Disposable Bottles.

*Sorting bottles by color is not necessary.





◆ Paper, Newspapers, Magazines, Cardboard, Paper Cartons

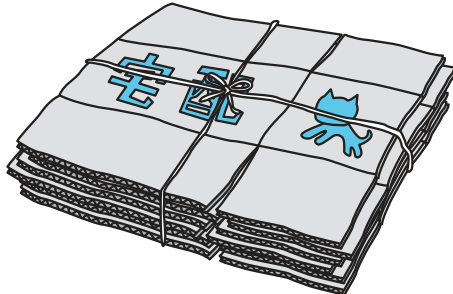
Scraps (flyers, paper boxes, paper bags, wrapping paper, mounting paper, envelopes, memo paper, print paper, etc.)

*Sort newspapers, magazines, cardboard, and paper cartons (except those with foil lining on the inside) by category and bundle together with string.

*For scrap paper, bundle together with magazines or place in a paper bag and tie it shut with a string.

*Open, rinse, and dry paper cartons before disposing of them.

*Thermal paper, carbon paper, shredded paper, etc. are to be disposed of as Combustible (Burnable) Waste.



◆ Cloth (old clothing and rags)

*Always put in a plastic bag and tie it shut with a string.

*Leather, fleece, down, vinyl, or synthetic fibers are to be disposed of with Bulky Waste.



Bringing Waste Directly to a Waste Treatment Facility

*Combustible, Incombustible, Bulky, and Hazardous Waste can be brought directly to the following waste treatment facilities.

*Treatment facilities may be crowded depending on the time, so be sure to call before bringing waste in.

Waste Treatment Facility Guide

●Combustible Waste Disposal

Kobari Clean Center (Incineration Plant)

☆Disposal Days: Monday - Friday (excluding public holidays and New Year holidays)

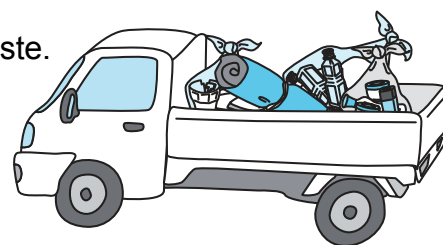
☆Disposal Time: 8:30 AM - noon, 1:00 PM - 4:00 PM

☆Address: 856 Kobari, Gyoda-shi (see map below)

☆Telephone:(048)559-3641

*A personal seal is required when bringing in Combustible Waste.

*There may be restrictions on disposal due to facility repairs, etc.; please call beforehand to check.



●Incombustible Waste/Bulky Waste/Hazardous Waste Disposal

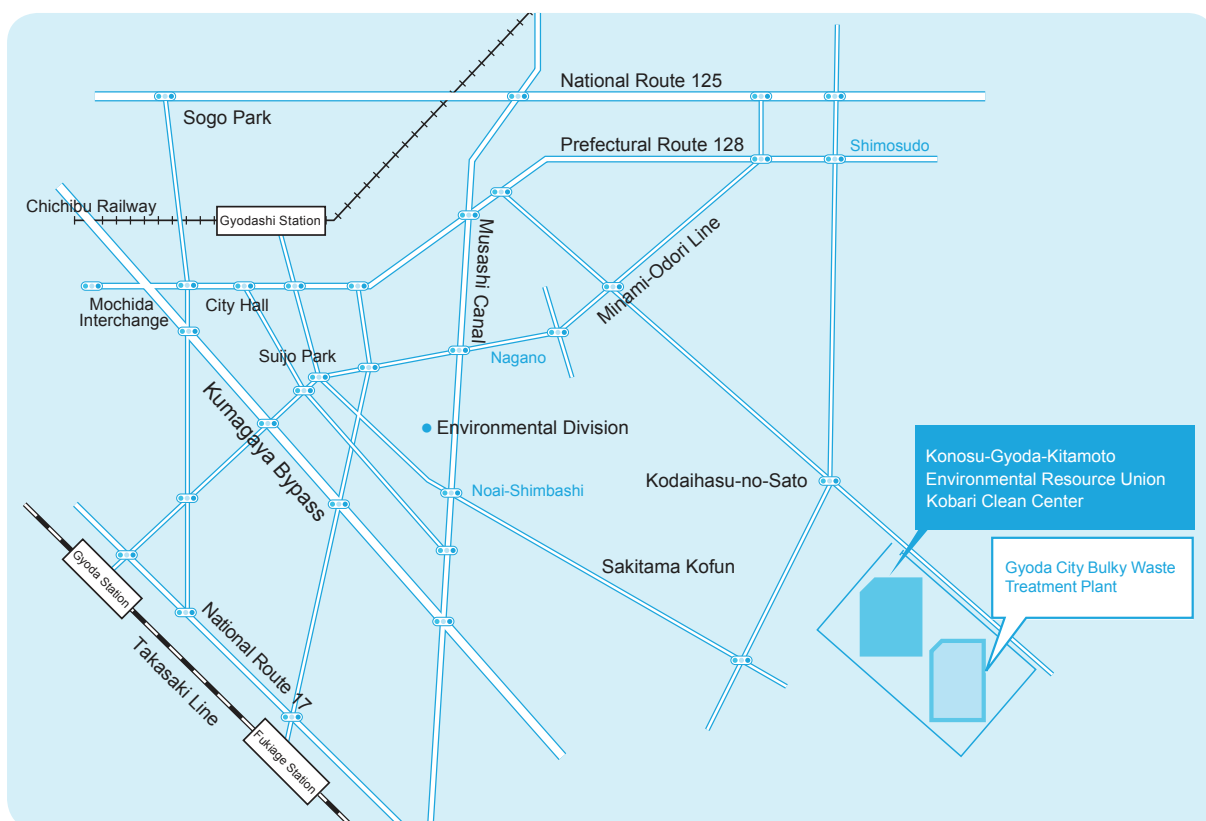
Gyoda City Bulky Waste Treatment Plant

☆Disposal Days: Monday - Friday (excluding public holidays and New Year holidays)

☆Disposal Time: 8:30 AM - noon, 1:00 PM - 4:30 PM

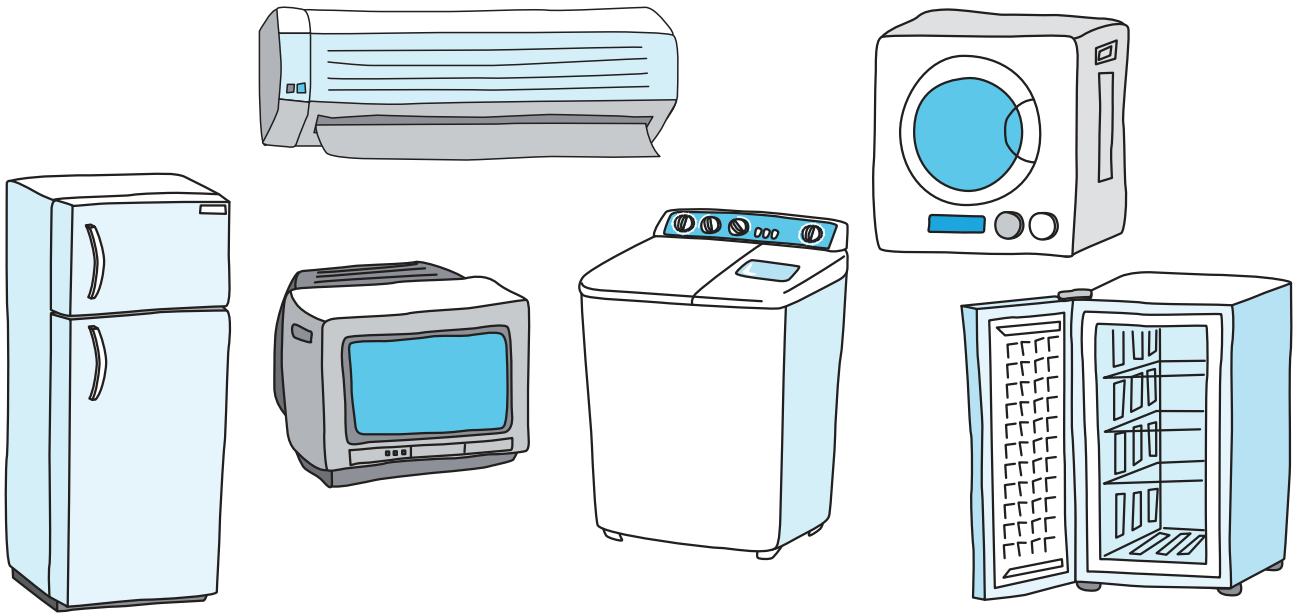
☆Address: 800 Kobari, Gyoda-shi (see map below)

☆Telephone:(048)559-0278



Processing for Items That Fall Under the Home Appliance Recycling Act

Six home appliances (televisions, air conditioners, washing machines, refrigerators, freezers, dryers) cannot be collected as waste under the Home Appliance Recycling Act.



Dispose of these items using one of the following three methods.

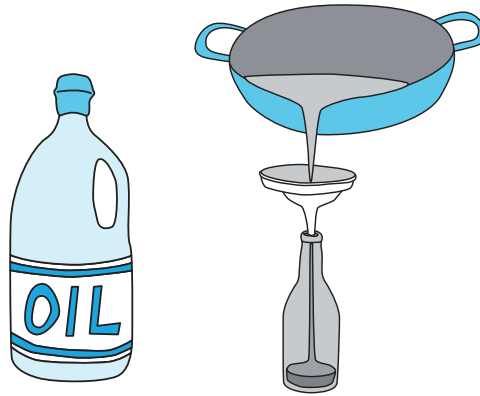
- ◆ Pay a Collection/Transport Fee and a Recycling Fee, then request that the store where you purchased the appliance pick it up or request pick up when purchasing a replacement. (Dealers are obliged to pick these items up.)
- ◆ Request pick-up by a collection and transportation company licensed by the city. (Collection/Transport Fee and a Recycling Fee are required.)
- ◆ Deliver the item directly to a pick-up location designated by the appliance manufacturer. (Fill in the required information on the Home Appliance Recycling Voucher at the post office, pay the Recycling Fee, then attach the sticker to the item you will be disposing of.)

*The price of Home Appliance Recycling Vouchers varies by appliance type and manufacturer, so be sure to check the category and maker beforehand.

*For collection and transportation companies or pick-up locations, please contact the Environment Division (13-12 Midori-cho, Gyoda-shi; TEL: (048)556-9530) or visit the Gyoda City Website.

About Cooking Oil Waste

- ◆ Both used and unused (expired) cooking oil from households are accepted.
Place used oil into a glass or plastic bottle and bring it to the Environment Division or Bulky Waste Disposal Center.



Disposing of Business-Related Waste

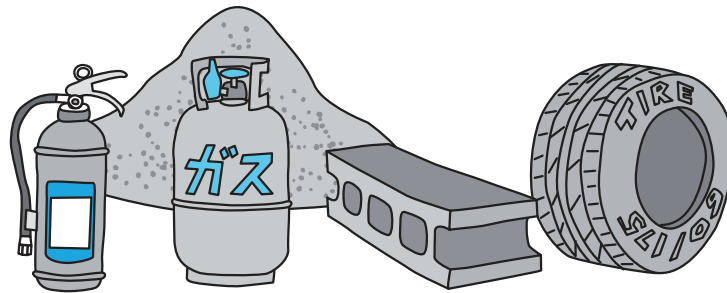
The Waste Management and Public Cleansing Act stipulates that business-related waste generated by stores, offices, restaurants, and other businesses must be disposed of properly at the business's responsibility and is not collected by the city.

*Do not dispose of business-related waste at waste collection sites.

*Business-related waste that can be processed by the city can be brought directly to Kobari Clean Center or the Bulky Waste Treatment Plant (paid), or disposed of by a city-licensed operator. (A processing fee will be charged.)

Items That Cannot Be Collected or Processed by the City

- ◆ Stone, soil, sand (including sand used as cat litter)
- ◆ Iron wire
- ◆ Items that fall under the Home Appliance Recycling Act
- ◆ Pianos
- ◆ Automotive parts
- ◆ Bricks
- ◆ Tires
- ◆ Oils and paints
- ◆ Vinyl sheets for farming
- ◆ Industrial waste
- ◆ Motors
- ◆ Sewing machines
- ◆ Bathtubs
- ◆ Plaster boards
- ◆ Motorbikes
- ◆ Farm equipment
- ◆ Concrete
- ◆ Blocks
- ◆ Fire extinguishers
- ◆ Chemicals
- ◆ Tatami (straw mats)
- ◆ Incinerated ash



*Ask the store or dealer you purchased it from to pick it up or ask a licensed waste disposal operator to dispose of it. (fees apply)

*For licensed operators, please contact the Environment Division
(13-12 Midori-cho, Gyoda-shi; TEL: (048)556-9530) or visit the Gyoda City Website.

*Batteries for private vehicles and motorcycles (excluding commercial vehicles and trucks), propane gas cylinders (2-5 kg), spring mattresses, sewing machines not made of cast metal, and waste cooking oil will be collected if they are brought directly to the Bulky Waste Treatment Plant. (Limited to household items that don't involve contractors, etc., for removal.)

*Ask an industrial waste disposal operator to dispose of construction-related waste.

List of Collection Days by District

Oshi District

District Name	Burnable Waste	Non-Burnable Waste	Bulky Waste	Hazardous Waste	Recyclables	
					Cans & Bottles	Paper & Cloth
Kitaya-Higashimachi (1)	Mon-Wed, Fri	Mon, Thu	2nd Tue of each month	1st Fri of each month	2nd & 4th Fri of each month	2nd Sat of each month
Kitaya (1)	//	//	//	//	//	//
Kitaya (2)	//	//	//	//	//	//
Obiguruwa	//	//	//	//	//	//
Mutsumon	//	//	//	//	//	//
Yaba	//	//	//	//	//	//
Yaba-Itchome	//	//	//	//	//	//
Motomachi	//	//	//	1st Thu of each month	//	//
Hommaru	//	//	//	//	//	//
Otemachi	//	//	//	//	//	//
Uchi-Gyoda (1)	//	//	//	//	//	//
Uchi-Gyoda (2)	//	//	//	//	//	//
Uchi-Gyoda (3)	//	//	//	//	//	//
Jyosai	//	//	2nd Thu of each month	//	//	//
Narita	//	//	//	//	//	//
Jonan	//	//	//	//	//	//
Temma (1)	//	//	//	//	//	//
Temma (2)	//	//	//	//	//	//
Kamiarai	//	//	//	1st Mon of each month	//	//
Tamachi	//	//	//	//	//	//

Gyoda District

District Name	Burnable Waste	Non-Burnable Waste	Bulky Waste	Hazardous Waste	Recyclables	
					Cans & Bottles	Paper & Cloth
Honcho (1)	Mon-Wed, Fri	Mon, Thu	2nd Wed of each month	1st Fri of each month	1st & 3rd Mon of each month	2nd Sat of each month
Honcho (2)	//	//	//	//	//	//
Aramachi	//	//	//	//	//	//
Hachiman-cho	//	//	//	//	//	//
Shimomachi	//	//	//	//	//	//
Miyamoto	//	//	//	//	//	//
Chuo	//	//	//	//	//	//
Excel Gyoda-Chuo	//	//	//	//	//	//

List of Collection Days by District

Sama District

District Name	Burnable Waste	Non-Burnable Waste	Bulky Waste	Hazardous Waste	Recyclables	
					Cans & Bottles	Paper & Cloth
Asahi (1)	Mon-Wed, Fri	Mon, Thu	2nd Wed of each month	1st Tue of each month	1st & 3rd Fri of each month	2nd Sat of each month
Asahi (2)	//	//	//	//	//	//
Mukaimachi	//	//	//	//	//	//
Midoricho	//	//	//	//	//	//
Sama (1)	//	//	2nd Fri of each month	//	//	//
Sama (2)	//	//	//	//	//	//
Sama-Shinmei	//	//	//	//	//	//
Sama-Sangen	//	//	//	//	//	//
Omachi	//	//	2nd Thu of each month	1st Thu of each month	//	//

Mochida District

District Name	Burnable Waste	Non-Burnable Waste	Bulky Waste	Hazardous Waste	Recyclables	
					Cans & Bottles	Paper & Cloth
Sugaya	Mon-Wed, Fri	Mon, Thu	3rd Mon of each month	1st Mon of each month	2nd & 4th Mon of each month	1st Sat of each month
Mochida-Kita (1)	//	//	//	//	//	//
Mochida-minami (1)	//	//	//	//	//	//
Mochida-Nagamachi	//	//	//	//	//	//
Kikunodai	//	//	//	//	//	//
Mochida-Gochome	//	//	//	//	//	//
Prefectural Mochida Housing Complex	//	//	//	//	//	//
Mochida-Daiichi (2)	//	//	2nd Thu of each month	//	//	//
Mochida-Daini (2)	//	//	//	//	//	//
Mochida-Kuraba (2)	//	//	//	//	//	//
Mochida-Tobu (3)	//	//	2nd Mon of each month	//	//	//
Miochida-Seibu (3)	//	//	//	//	//	//
Mochida-Omiyaguchi (3)	//	//	//	//	//	//
Mochida-Sunahara	//	//	3rd Tue of each month	//	//	//
Mitsui-Sunahara	//	//	//	//	//	//
Mochida-Nishi	//	//	//	//	//	//
Tanada-Sanchome	//	//	//	//	//	//
Komagata	//	//	2nd Mon of each month	1st Thu of each month	1st & 3rd Fri of each month	//
Nishi-Komagata	//	//	//	//	//	//
Maeya	Mon, Wed, Fri	//	//	1st Tue of each month	2nd & 4th Mon of each month	//

List of Collection Days by District

Hoshikawa District

District Name	Burnable Waste	Non-Burnable Waste	Bulky Waste	Hazardous Waste	Recyclables	
					Cans & Bottles	Paper & Cloth
Saijo (1)	Mon, Wed, Fri	Tue, Fri	4th Mon of each month	1st Fri of each month	1st & 3rd Mon of each month	4th Sat of each month
Saijo (2)	//	//	//	//	//	//
Wada (1)	//	//	//	//	//	//
Wada (2)	//	//	//	//	//	//
Yanagitsubo	Mon - Wed, Fri	//	3rd Fri of each month	//	//	//
Yago (1)	//	//	//	//	//	//
Yago (3)	//	//	//	//	//	//
Kobayashi Housing Complex	//	//	//	//	//	//
Yago-Shinden (2)	//	//	3rd Thu of each month	//	//	//
Block 1, Yago-Higashi (2)	//	//	//	//	//	//
Block 2, Yago-Higashi (2)	//	//	//	//	//	//
Iikura	//	//	//	//	//	//
Sakae-cho	//	//	//	//	//	//
Kasuga	//	//	//	//	//	//
Toei	//	//	//	//	//	//
Azumadai	//	//	3rd Fri of each month	1st Wed of each month	//	//
Saijo Housing Complex	//	//	4th Mon of each month	1st Fri of each month	//	//

Nagano District

District Name	Burnable Waste	Non-Burnable Waste	Bulky Waste	Hazardous Waste	Recyclables	
					Cans & Bottles	Paper & Cloth
Sakura (1)	Mon - Wed, Fri	Tue, Fri	4th Wed of each month	1st Wed of each month	1st & 3rd Thu of each month	3rd Sat of each month
Sakura (2)	//	//	//	//	//	//
Sakura-Hokubu (3)	//	//	//	//	//	//
Sakura-Nanbu (3)	//	//	//	//	//	//
Nagano Residence	//	//	//	//	//	//
Tabata	//	//	//	//	//	//
Fujimi-Seibu	//	//	4th Tue of each month	//	//	//
Fujimi-Chuo	//	//	//	//	//	//
Fujimi-Tobu	//	//	//	//	//	//
Fujimi-Hokubu	//	//	//	//	//	//
Hayashi	//	//	//	//	//	//
Hashiba	//	//	//	//	//	//
Nakassai	//	//	//	//	//	//
Horinouchi	//	//	//	//	//	//
Tsurumaki	//	//	//	//	//	//
Mangan	Mon, Wed, Fri	//	4th Thu of each month	1st Tue of each month	//	//
Hakusan	//	//	//	//	//	//
Oshimo	//	//	//	//	//	//
Nagano-Shinden	//	//	//	//	//	//
Sakuragaoka	Mon - Wed, Fri	//	4th Wed of each month	1st Wed of each month	1st & 3rd Mon of each month	//

List of Collection Days by District

Araki District

District Name	Burnable Waste	Non-Burnable Waste	Bulky Waste	Hazardous Waste	Recyclables	
					Cans & Bottles	Paper & Cloth
All Districts	Mon, Wed, Fri	Tue, Fri	4th Fri of each month	1st Thu of each month	1st & 3rd Tue of each month	4th Sat of each month

Suka District

District Name	Burnable Waste	Non-Burnable Waste	Bulky Waste	Hazardous Waste	Recyclables	
					Cans & Bottles	Paper & Cloth
All Districts	Mon, Wed, Fri	Tue, Fri	4th Fri of each month	1st Thu of each month	1st & 3rd Wed of each month	4th Sat of each month

Kitagawara District

District Name	Burnable Waste	Non-Burnable Waste	Bulky Waste	Hazardous Waste	Recyclables	
					Cans & Bottles	Paper & Cloth
All Districts	Mon, Wed, Fri	Tue, Fri	4th Mon of each month	1st Thu of each month	1st & 3rd Wed of each month	4th Sat of each month

Sakitama District

District Name	Burnable Waste	Non-Burnable Waste	Bulky Waste	Hazardous Waste	Recyclables	
					Cans & Bottles	Paper & Cloth
All Districts	Mon, Wed, Fri	Mon, Thu	2nd Fri of each month	1st Tue of each month	2nd & 4th Wed of each month	1st Sat of each month

Hoshimiya District

District Name	Burnable Waste	Non-Burnable Waste	Bulky Waste	Hazardous Waste	Recyclables	
					Cans & Bottles	Paper & Cloth
All Districts	Mon, Wed, Fri	Tue, Fri	4th Mon of each month	1st Fri of each month	1st & 3rd Tue of each month	4th Sat of each month

Oi District

District Name	Burnable Waste	Non-Burnable Waste	Bulky Waste	Hazardous Waste	Recyclables	
					Cans & Bottles	Paper & Cloth
Kadoi	Mon - Wed, Fri	Tue, Fri	3rd Wed of each month	1st Mon of each month	2nd & 4th Thu of each month	1st Sat of each month
Daisan-Kadoi	//	//	//	//	//	//
Kadoi-Nichome	//	//	//	//	//	//
Kadoi Housing Complex	//	//	//	//	//	//
Ichiriyama	//	//	//	//	//	//
Oshiage-cho	//	//	//	//	//	//
Shimizu-cho	//	//	//	//	//	//
Fukami-cho	//	//	//	//	//	//
Nishi-Shimmachi	//	//	3rd Tue of each month	//	//	//
Tanada-cho	//	//	//	//	//	//

List of Collection Days by District

Shimo-oshi District

District Name	Burnable Waste	Non-Burnable Waste	Bulky Waste	Hazardous Waste	Recyclables	
					Cans & Bottles	Paper & Cloth
Shimo-oshi-Kamibun	Mon, Wed, Fri	Mon, Thu	2nd Mon of each month	1st Tue of each month	2nd & 4th Thu of each month	3rd Sat of each month
Tsutsumine	//	//	//	//	//	//
Hinoue	//	//	//	//	//	//
Minamikomagata	Mon - Wed, Fri	//	//	1st Thu of each month	//	//
Shimo-oshi Housing Complex	//	//	//	1st Tue of each month	//	//

Ota District

District Name	Burnable Waste	Non-Burnable Waste	Bulky Waste	Hazardous Waste	Recyclables	
					Cans & Bottles	Paper & Cloth
Wakakodama-Chuo	Mon, Wed, Fri	Tue, Fri	4th Thu of each month	1st Wed of each month	2nd & 4th Tue of each month	3rd Sat of each month
Wakakodama-Roppongi	//	//	//	//	//	//
Wakakodama-Nambu	//	//	//	//	//	//
Wakakodama-Suguro	//	//	//	//	//	//
Shimosudo	//	//	//	//	//	//
Kobari-Kami	//	//	//	//	//	//
Kobari-Nakagumi	//	//	//	//	//	//
Aoba Residence	//	//	//	//	//	//
Kobari-Shimo	//	//	//	//	//	//
Touma	//	//	//	//	//	//
Manaita	//	//	//	//	//	//
Sekine	//	//	//	//	//	//
Fujiwara-cho-Tobu	Mon - Wed, Fri	//	//	//	//	//
Fujiwara-cho-Seibu	//	//	//	//	//	//
Fujiwara-cho-Chuo	//	//	//	//	//	//
Fujiwara-cho-Nambu	//	//	//	//	//	//
Manaita-Azuma	//	//	//	//	//	//

Minami-Kawara District

District Name	Burnable Waste	Non-Burnable Waste	Bulky Waste	Hazardous Waste	Recyclables	
					Cans & Bottles	Paper & Cloth
All Districts	Mon, Wed, Fri	Tue, Fri	4th Mon of each month	1st Fri of each month	1st & 3rd Tue of each month	4th Sat of each month

How to Dispose of Waste & Recyclables (In Alphabetical Order)

・Combustible Waste (Burnable Waste) ・Incombustible Waste (Non-Burnable Waste)

	Item Name	品目名	Sorting Category	Tips for Disposal
A	Accessories (metal, glass, plastic)	アクセサリー (金属・ガラス製・プラスチック製)	Incombustible Waste	
	Accessories (wooden)	アクセサリー(木製)	Combustible Waste	
	Accordion curtains	アコーディオンカーテン	Bulky Waste	Tie shut so it does not open.
	Advertisements (flyers other than those in newspapers, etc.)	広告類 (新聞折込以外のチラシ等)	Recyclables	Bundle together with magazines.
	Air conditioners	エアコン	×	This item falls under the Home Appliance Recycling Act. Request drop-off at a store or dealer.
	Air pumps (including small motorized pumps)	空気入れ (小型電動含む)	Incombustible Waste	Items larger than an 18 L plastic kerosene container are considered Bulky Waste.
	Air purifiers	空気清浄機	Small Home Appliances	Put out on Bulky Waste day.
	Aluminum foil	アルミ箔	Incombustible Waste	
	Aluminum window sashes	アルミサッシ	×	Have a professional dispose of it.
	Amplifiers (audio)	アンプ (オーディオ)	Small Home Appliances	Put out on Bulky Waste day.
	Antennas (including parabolic)	アンテナ (パラボラ含む)	Bulky Waste	
	Artificial flowers	造花	Incombustible Waste	
	Artificial grass	人工芝	Bulky Waste	
	Ash from incinerations	焼却灰	×	Have a disposal operator dispose of it.
	Attaché cases	アタッシュケース	Bulky Waste	
	Audio racks	オーディオラック	Bulky Waste	
	Automotive parts	自動車部品	×	Have a retailer or professional dispose of it.
B	Baby baths	ベビーバス	Bulky Waste	
	Baby bottles	ほ乳びん	Incombustible Waste	
	Baby carriages	乳母車 (ベビーカー)	Bulky Waste	
	Baby carriages	ベビーカー	Bulky Waste	
	Baby comforters	ベビーぶとん	Bulky Waste	
	Backpacks	リュックサック	Incombustible Waste	Items larger than an 18 L plastic kerosene container are considered Bulky Waste.
	Bags	かばん	Incombustible Waste	
	Bags	バッグ	Incombustible Waste	Items larger than an 18 L plastic kerosene container are considered Bulky Waste.
	Balls (for sports)	ボール (スポーツ用)	Incombustible Waste	
	Bamboo shades	すだれ	Bulky Waste	Tie before disposing.
	Bamboo swords	竹刀	Bulky Waste	
	Barbecue equipment (grill nets, iron plates, etc.)	バーベキュー用品 (網、鉄板等)	Bulky Waste	
	Baseball bats (metal or wooden)	バット (金属製・木製)	Bulky Waste	
	Baseball gloves	グローブ (野球)	Incombustible Waste	
	Bathmats	風呂マット	Incombustible Waste	
	Bathtub lids	風呂のふた	Incombustible Waste	Tie it together with string.
	Bathtubs	バスタブ	×	Have a professional dispose of it.
	Bathtubs	風呂がま	×	Have a professional dispose of it.
	Bathtubs	浴槽	×	Have a professional dispose of it.
	Batteries	電池	Hazardous Waste	
	Batteries (for cars or motorbikes)	バッテリー (自家用車・バイク)	×	Bring directly to the Bulky Waste Treatment Plant. For commercial vehicle or truck batteries, please have professional dispose of it.
	Beach chairs	サマーベット	Bulky Waste	
	Beach parasols	ビーチパラソル	Bulky Waste	
	Beds	ベッド	Bulky Waste	Bring spring bed mattresses directly to the Bulky Waste Treatment Plant.

A
B

How to Dispose of Waste & Recyclables (In Alphabetical Order)

・Combustible Waste (Burnable Waste)

・Incombustible Waste (Non-Burnable Waste)

	Item Name	品目名	Sorting Category	Tips for Disposal
B	Belts (for slacks)	ベルト (スラックス用)	Incombustible Waste	
	Bicycle trailers	リヤカー	×	Have a professional dispose of it.
	Bicycles	自転車	Bulky Waste	Write "Waste" on the bicycle to distinguish it from stolen bicycles.
	Binoculars	双眼鏡	Incombustible Waste	
	Birdcages	鳥かご	Incombustible Waste	Wooden items are considered Bulky Waste.
	Blankets	毛布	Bulky Waste	Fold and tie it together with string.
	Blankets for heated tables	こたつ布団	Bulky Waste	
	Blinds (household use items only)	ブラインド (家庭から出たものに限る)	Bulky Waste	Tie it together with string.
	Blocks for clothes drying rack	物干し台のブロック	×	Have a professional dispose of it.
	Blood pressure monitors	血圧計	Incombustible Waste	Remove batteries from battery-operated items.
	Books/Magazines	本・雑誌	Recyclables	Bundle it together with string.
	Bookshelves	本棚	Bulky Waste	
	Boots	長靴	Incombustible Waste	
	Bowling balls	ボーリングの球	×	Have a disposal operator dispose of it.
	Branches (more than 5 cm diameter)	枝類 (太さ直径5cmを超えるもの)	×	*First contact Kobari Clean Center to check the length and other details before creating bundles, then bring bundles directly to the center.
	Branches (up to 5 cm in diameter)	枝類 (太さ直径5cm以下)	Combustible Waste	Make bundles of about 25 cm in diameter and 50 cm in length. For large amounts, please bring directly to Kobari Clean Center.
	Braziers (hibachi)	火鉢	Bulky Waste	
	Bread makers	パン焼き器	Small Home Appliances	Put out on Bulky Waste day.
	Bricks	レンガ	×	Have a professional dispose of it.
	Briquettes	練炭	×	Have a disposal operator dispose of it.
C	Brooms	ほうき	Incombustible Waste	
	Buckets	バケツ	Incombustible Waste	
	Bug cages	虫かご	Incombustible Waste	
	Building blocks (plastic)	積み木 (プラスチック製)	Incombustible Waste	
	Building blocks (wooden)	積み木 (木製)	Combustible Waste	
	Calculators	電卓	Small Home Appliances	Put out on Bulky Waste day.
	Cameras (including video and digital cameras)	カメラ (ビデオ、デジタルカメラ等含む)	Small Home Appliances	Put out on Bulky Waste day.
	Candy boxes (paper)	菓子箱 (紙製)	Recyclables	Goes with scrap paper.
	Candy tins (metal)	菓子缶 (金属製)	Recyclables	Goes with cans.
	Canes and walking sticks (not wooden)	杖・ステッキ (木製以外)	Incombustible Waste	Items larger than 50 cm are considered Bulky Waste.
	Canes and walking sticks (wooden)	杖・ステッキ (木製)	Bulky Waste	
	Cans (juice cans, candy tins, spray cans, etc.)	缶類 (ジュース缶、菓子缶、スプレー缶等)	Recyclables	Rinse the inside with water before disposing. Spray cans do not require holes, but be sure to empty it of its contents.
	Car navigation systems	カーナビ	Small Home Appliances	Put out on Bulky Waste day.
	Carbon paper	カーボン用紙	Combustible Waste	
	Cardboard	段ボール	Recyclables	
	Carpet	カーペット	Bulky Waste	Make as small as possible before disposing.
	Cassette tapes (small quantities)	カセットテープ (数本程度)	Incombustible Waste	Put large amounts out with Bulky Waste.
	Cast metal	鋳物	×	Have a disposal operator dispose of it.
	Catalogs	カタログ	Recyclables	Goes with magazines.
	CD players	CDプレーヤー	Small Home Appliances	Put out on Bulky Waste day.

How to Dispose of Waste & Recyclables (In Alphabetical Order)

・Combustible Waste (Burnable Waste)

・Incombustible Waste (Non-Burnable Waste)

	Item Name	品目名	Sorting Category	Tips for Disposal
C	CDs (discs)	CD (盤)	Incombustible Waste	
	Cement	セメント	×	Have a professional dispose of it.
	Ceramic grills (shichirin)	七輪	Incombustible Waste	
	Ceramics	陶磁器	Incombustible Waste	
	Chainsaws	チェーンソー	Bulky Waste	
	Chairs (metal, wooden)	イス (金属・木製)	Bulky Waste	
	Chargers	充電器	Incombustible Waste	
	Chests	タンス	Bulky Waste	
	Child seats	チャイルドシート	Bulky Waste	
	Chisels	のみ	Incombustible Waste	Cover in paper or cloth.
	Christmas trees	クリスマスツリー	Incombustible Waste	Items larger than an 18 L plastic kerosene container are considered
	Clay	粘土	Incombustible Waste	
	Clocks	時計	Small Home Appliances	Remove batteries. Put out on Bulky Waste day.
	Clothes dryers	衣類乾燥機	×	This item falls under the Home Appliance Recycling Act. Request drop-off at a store or dealer.
	Clothespins	洗濯ばさみ	Incombustible Waste	
	Clothing cases	衣装ケース	Bulky Waste	
	Coffeemakers	コーヒーメーカー	Small Home Appliances	Put out on Bulky Waste day.
	Comforter dryers	ふとん乾燥機	Bulky Waste	
	Comforter drying racks	ふとん干し	Bulky Waste	
	Comforters	ふとん	Bulky Waste	
	Comic books	まんが本	Recyclables	
	Computer keyboards	パソコンのキーボード	Small Home Appliances	Put out on Bulky Waste day.
	Computer monitors	パソコンのモニター	Small Home Appliances	Put out on Bulky Waste day.
	Computer printers	パソコンのプリンタ	Bulky Waste	
	Computer racks	パソコンラック	Bulky Waste	
	Computers (desktop or laptop)	パソコン (デスクトップ型、ノート型)	Small Home Appliances	Put out on Bulky Waste day.
	Concrete blocks	ブロック	×	Have a professional dispose of it.
	Concrete blocks, bricks	コンクリートブロック・レンガ	×	Have a professional dispose of it.
	Concrete debris	コンクリート破片	×	Have a professional dispose of it.
	Construction materials and waste	建築資材・廃材	×	Have a professional dispose of it.
	Cooler boxes	クーラーボックス	Incombustible Waste	Items larger than an 18 L plastic kerosene container are considered Bulky Waste.
	Coolers	クーラー	×	This item falls under the Home Appliance Recycling Act. Request drop-off at a store or dealer.
	Cooling packs	アイスノン (冷却用)	Incombustible Waste	
	Copy machines (household use items only)	コピー機 (家庭用に限る)	Bulky Waste	
	Cord reels	コードリール	Bulky Waste	
	Cords (for power, etc.)	コード (電気配線等)	Incombustible Waste	
	Cosmetics bottles	化粧品のビン	Incombustible Waste	
	Crayons	クレヨン	Incombustible Waste	
	Cribs	ベビーベット	Bulky Waste	
	Crowbars	バール	Bulky Waste	
	Cupboards	食器棚	Bulky Waste	

C

How to Dispose of Waste & Recyclables (In Alphabetical Order)

・Combustible Waste (Burnable Waste)

・Incombustible Waste (Non-Burnable Waste)

	Item Name	品目名	Sorting Category	Tips for Disposal
C	Cups	コップ	Incombustible Waste	Wrap broken items in newspaper, etc. Cannot be put out with recyclable glass bottles.
	Curtain rails (metal and plastic)	カーテンレール (金属性・プラスチック製)	Bulky Waste	
	Curtains	カーテン	Bulky Waste	Make bundles of about 50 cm in size.
	Cushions	クッション	Bulky Waste	Items smaller than an 18 L plastic kerosene container are considered Incombustible Waste.
	Cutting boards (not wooden)	まな板 (木製以外)	Bulky Waste	
	Cutting boards (wooden)	まな板 (木製)	Combustible Waste	
	Cycling machines	サイクリングマシン	Bulky Waste	Put out on Bulky Waste day.
D	Dehumidifiers	除湿器	Bulky Waste	
	Desiccants	乾燥剤	Incombustible Waste	
	Desk mats	デスクマット	Bulky Waste	
	Desks	机	Bulky Waste	
	Detergent containers (shampoo containers)	洗剤容器 (シャンプーの容器)	Incombustible Waste	Empty container of its contents.
	Diapers (paper and cloth)	おむつ (紙製・布製)	Combustible Waste	Remove any waste.
	Dictionaries/Encyclopedias	辞書・辞典	Recyclables	Tie together with a string before disposing.
	Digital blood pressure meters	デジタル血圧計	Small Home Appliances	Remove batteries from battery-operated items. Put out on Bulky Waste day.
	Dining tables	食卓テーブル	Bulky Waste	
	Dishwashers and dish dryers	食器乾燥機・食器洗い機	Bulky Waste	
	Disposable heating pads	使い捨てカイロ	Incombustible Waste	
	Dog houses	犬小屋	Bulky Waste	
	Doll cases	人形ケース	Bulky Waste	
	Dollies (cart)	台車 (手押し車)	Bulky Waste	
	Dolls (wooden)	人形 (木製)	Combustible Waste	Plastic or ceramic items are considered Incombustible Waste.
	Doors	戸・ドア	×	Have a professional dispose of it.
	Down comforters	羽毛ふとん	Bulky Waste	
	Dressers	ドレッサー	Bulky Waste	
	Drum cans	ドラム缶	Bulky Waste	Contents must be disposed of separately.
	Drum sets	ドラムセット	Bulky Waste	
	Drums (household use 18 liter)	一斗缶 (家庭用18ℓ)	Recyclables	Crush it before disposing. Rusty cans are to be put with Incombustible Waste.
	Dryers	ドライヤー	Small Home Appliances	Put out on Bulky Waste day.
	Drywall	石膏ボード	×	Have a professional dispose of it.
	Duckboards (sunoko)	すのこ	Bulky Waste	Tie together before disposing.
	Dumbbells	ダンベル	Bulky Waste	
	DVD players	DVDプレイヤー	Small Home Appliances	Put out on Bulky Waste day.
	DVDs (discs)	DVD (盤)	Incombustible Waste	
E	Earthenware	せともの	Incombustible Waste	
	Egg cartons (paper)	卵のパック (紙製)	Recyclables	
	Egg cartons (plastic)	卵のパック (プラスチック製)	Incombustible Waste	
	Egg shells	卵の殻	Combustible Waste	
	Electric blankets	電気毛布	Bulky Waste	Fold as small as possible and tie together.
	Electric burners	電気コンロ	Small Home Appliances	Put out on Bulky Waste day.
	Electric carpets	電気カーペット	Bulky Waste	Fold as small as possible before disposing.

How to Dispose of Waste & Recyclables (In Alphabetical Order)

・Combustible Waste (Burnable Waste)

・Incombustible Waste (Non-Burnable Waste)

	Item Name	品目名	Sorting Category	Tips for Disposal
E	Electric fans	扇風機	Small Home Appliances	Put out on Bulky Waste day.
	Electric heated tables	電気こたつ	Bulky Waste	
	Electric kettles	電気ポット	Small Home Appliances	Put out on Bulky Waste day.
	Electric pianos (electric organs)	電子ピアノ (電子オルガン)	Bulky Waste	Items the size of a study desk. Items larger than what is listed above are to be disposed of by a professional.
	Electric rice cookers	電気炊飯器	Small Home Appliances	Put out on Bulky Waste day.
	Electric saws (household use items only)	電気のかぎり (家庭で使っていたものに限る)	Bulky Waste	
	Electric shavers	電気カミソリ	Small Home Appliances	Put out on Bulky Waste day.
	Electric three- or four-wheeled vehicles	電動三・四輪車	×	Have a professional dispose of it.
	Electric toothbrushes	電動歯ブラシ	Small Home Appliances	Remove batteries. Put out on Bulky Waste day.
	Electric wheelchairs	電動車イス	×	Have a professional dispose of it.
	Electronic organs	エレクトーン	Bulky Waste	
	Empty lunch containers (from convenience stores, etc.)	弁当の空き容器 (コンビニ等)	Incombustible Waste	
	Enamel products	ほうろう製品	Incombustible Waste	Construction waste such as bathtubs and toilets cannot be disposed of by the City.
	Envelopes	封筒	Recyclables	
	Exercise equipment	トレーニング器具	Bulky Waste	
	Extension cords	延長コード	Incombustible Waste	Cut to lengths of under 50 cm and bundle together.
	External units (for air conditioners)	室外機 (エアコン用)	×	This item falls under the Home Appliance Recycling Act.
F	Fallen leaves	落ち葉	Combustible Waste	Place in a paper bag. For large amounts, please bring directly to Kobari Clean Center.
	Fan coolers	冷風機	Bulky Waste	
	Fan heaters	ファンヒーター	Bulky Waste	For heaters that use kerosene, empty all kerosene.
	Farming equipment	農業用機械	×	Have a professional dispose of it.
	Fax machine stands	ファックス台	Bulky Waste	
	Fax machines (household use)	ファックス (家庭用)	Small Home Appliances	Put out on Bulky Waste day.
	Feminine hygiene products	生理用品	Combustible Waste	
	Fencing	フェンス	×	Have a professional dispose of it.
	Fertilizer	肥料	×	Have a professional dispose of it.
	Film	フィルム	Incombustible Waste	
	Film negatives (for photos)	ネガ (写真用)	Incombustible Waste	
	Fire extinguishers	消火器	×	Have a retailer or professional dispose of it.
	Fireworks (unused)	花火 (使用していないもの)	×	Have a professional dispose of it.
	Fireworks (used)	花火 (使用済)	Combustible Waste	
	Fishing rod (wooden)	釣りざお (木製)	Bulky Waste	
	Fishing rods (not wooden)	釣りざお (木製以外)	Incombustible Waste	Items larger than 50 cm are considered Bulky Waste.
	Fixed-weight dumbbells	鉄アレイ (ダンベル)	Bulky Waste	
	Flashlights	懐中電灯	Incombustible Waste	Remove batteries.
	Floor cushions	座布団	Bulky Waste	
	Flowerpots (ceramic or plastic)	植木鉢 (陶製・プラスチック製)	Incombustible Waste	Remove dirt before disposing.
	Fluorescent light tubes	蛍光管	Hazardous Waste	
	Fluorescent lighting fixture sets	蛍光灯器具一式	Small Home Appliances	Put out on Bulky Waste day.
	Foil (for gas ranges, etc.)	ホイル (ガスレンジ用)	Incombustible Waste	

E
F

How to Dispose of Waste & Recyclables (In Alphabetical Order)

・Combustible Waste (Burnable Waste)

・Incombustible Waste (Non-Burnable Waste)

	Item Name	品目名	Sorting Category	Tips for Disposal
F	Frames (metal and plastic)	額縁 (金属・プラスチック製)	Incombustible Waste	Items larger than 50 cm are considered Bulky Waste.
	Frames (wooden)	額縁 (木製)	Combustible Waste	Items larger than 50 cm are considered Bulky Waste.
	Fresh flowers	生花	Combustible Waste	
	Frying pans	フライパン	Incombustible Waste	
	Fur	毛皮	Incombustible Waste	Items larger than an 18 L plastic kerosene container are considered
	Futon mattresses	敷きふとん	Bulky Waste	
G	Galvanized iron	トタン	Bulky Waste	
	Game consoles (for household use)	ゲーム機 (家庭用)	Small Home Appliances	Remove batteries from battery-operated items. Put out on Bulky Waste day.
	Garbage disposals	生ごみ処理機	Bulky Waste	
	Garden trees (more than 5 cm in diameter)	庭木 (太さ直径 5cm を超えるもの)	×	*First contact Kobari Clean Center to check length and other details before creating bundles, then bring the bundles directly to the center.
	Garden trees (up to 5 cm in diameter)	庭木 (太さ直径 5cm 以下)	Combustible Waste	Make bundles of about 25 cm in diameter and 50 cm in length. Remove dirt. For large amounts, please bring directly to Kobari Clean Center.
	Gas burners	ガスコンロ	Incombustible Waste	Items larger than an 18 L plastic kerosene container are considered Bulky Waste.
	Gas canisters (cartridge type)	ガスボンベ (カートリッジ式)	Recyclables	Use up all gas and make a hole in the can.
	Gas canisters (propane type)	ガスボンベ (プロパン用)	×	Consult a dealer. Bring small items up to 2.5 kg directly to the Bulky Waste Treatment Plant.
	Gas fan heaters	ガスファンヒーター	Incombustible Waste	Items larger than an 18 L plastic kerosene container are considered Bulky Waste.
	Gas ranges	ガスレンジ	Bulky Waste	Items smaller than an 18 L plastic kerosene container are considered Incombustible Waste.
	Gas stoves	ガストーブ	Incombustible Waste	Items larger than an 18 L plastic kerosene container are considered Bulky Waste.
	Gas water heater (for kitchen)	ガス湯沸かし器 (小型台所用)	Small Home Appliances	Put out on Bulky Waste day.
	Gasoline/Blended gasoline	ガソリン・混合ガソリン	×	Consult a dealer.
	Gate doors	門扉	×	Have a professional dispose of it.
	Glass bottles (for food)	ビン (食用)	Recyclables	Rinse the inside.
	Glass bottles (other)	ビン (その他)	Incombustible Waste	
	Glass cases (doll cases, etc.)	ガラスケース (人形ケース等)	Incombustible Waste	Wrap broken items in the newspaper, etc.
	Glass sauce containers	ソースのビン容器	Recyclables	Rinse the inside with water before disposing.
	Glass soy sauce bottles	醤油のビン	Recyclables	Rinse the inside with water before disposing.
	Glass, glass products (items under 50 cm)	ガラス、ガラス製品 (50cm 以下のもの)	Incombustible Waste	Have a professional dispose of it.
	Glasses	めがね	Incombustible Waste	
	Glasses (for drinking)	グラス	Incombustible Waste	Wrap broken items in the newspaper, etc. Cannot be put out with recyclable glass bottles.
	Globes	地球儀	Incombustible Waste	
	Glow lamps	グローランプ	Incombustible Waste	
	Go (board game) boards (wooden)	碁盤 (木製)	Combustible Waste	Put plastic items out with Incombustible Waste.
	Go (board game) pieces	碁石	Incombustible Waste	
	Golf bags	ゴルフバック	Bulky Waste	
	Golf balls	ゴルフボール	Incombustible Waste	
	Golf clubs	ゴルフクラブ	Bulky Waste	
	Grass	草	Combustible Waste	Dry and place in a paper bag before disposing. Remove dirt. For large amounts, please bring directly to Kobari Clean Center.
	Grindstones	砥石	×	Have a professional dispose of it.

How to Dispose of Waste & Recyclables (In Alphabetical Order)

・Combustible Waste (Burnable Waste)

・Incombustible Waste (Non-Burnable Waste)

	Item Name	品目名	Sorting Category	Tips for Disposal
G	Guitars	ギター	Bulky Waste	
H	Hanger racks	ハンガーラック	Bulky Waste	
	Hangers	ハンガー	Incombustible Waste	Partially wooden items are considered Bulky Waste.
	Hanging exercise equipment	ぶら下がり健康器	Bulky Waste	
	Harmonicas	ハーモニカ	Incombustible Waste	
	Headphones	ヘッドホン	Incombustible Waste	
	Health devices (motorized treadmills, etc.)	健康器具 (電動式ランニングマシン等)	Bulky Waste	
	Heated carpets	ホットカーペット	Bulky Waste	Fold as small as possible and tie together.
	Heated tables	こたつ	Bulky Waste	
	Heater guards	ストーブガード	Bulky Waste	
	Heating pads (disposable)	カイロ (使い捨て)	Incombustible Waste	
	Helmets	ヘルメット	Incombustible Waste	
	Hina dolls (set)	雛人形 (一式)	Bulky Waste	
	Hose reels	ホースリール	Bulky Waste	
	Hoses	ホース	Incombustible Waste	Cut to lengths of about 50 cm before disposing.
	Hot plates	ホットプレート	Small Home Appliances	Put out on Bulky Waste day.
	Hot-water bottles	湯たんぽ	Incombustible Waste	
	Humidifiers	加湿器	Small Home Appliances	Put out on Bulky Waste day.
I	Ice packs	保冷剤	Incombustible Waste	
	Ice picks	アイスピック	Incombustible Waste	Cover the sharp end with paper or cloth.
	Incinerators (household use)	焼却炉 (家庭用)	×	Have a disposal operator dispose of it.
	Indoor clothes drying racks	室内用物干し	Bulky Waste	
	Ink cartridges (for computer printers)	インクカートリッジ (パソコンプリンター用)	Incombustible Waste	Use a post office or other collection box (Gyoda Post Office) whenever possible.
	Ink ribbons	インクリボン	Incombustible Waste	
	Inkstones	硯	Incombustible Waste	
	Insecticide containers	殺虫剤の容器	Incombustible Waste	Making holes is not necessary, but empty can of all its contents.
	Instant water heaters	瞬間湯沸し器	Bulky Waste	
	Ironing boards	アイロン台	Incombustible Waste	Items larger than an 18 L plastic kerosene container are considered Bulky Waste. Partially wooden items are considered Bulky Waste.
J	Irons	アイロン	Small Home Appliances	Put out on Bulky Waste day.
	Jacks (for passenger vehicles)	ジャッキ (乗用車用)	Bulky Waste	
	Japanese-style sliding screens (fusuma)	ふすま	×	Have a professional dispose of it.
	Jars	壺	Incombustible Waste	Items larger than an 18 L plastic kerosene container are considered Bulky Waste.
K	Juice mixers	ジューサーミキサー	Small Home Appliances	Put out on Bulky Waste day.
	Karaoke sets (for household use)	カラオケセット (家庭用)	Bulky Waste	
	Kendo equipment sets	剣道防具一式	Bulky Waste	
	Kettles	やかん	Incombustible Waste	
	Keyboards (musical instrument)	キーボード (楽器)	Bulky Waste	
	Kitchen scale (for household use)	計量ばかり (家庭用)	Incombustible Waste	
	Kitchen waste	生ごみ	Combustible Waste	Drain water well.
	Knitting machines	編み機	Bulky Waste	
	Knives	ナイフ	Incombustible Waste	Cover the blade with a cloth, etc. Partially wooden items are considered Bulky Waste.

G
H
I
J
K

How to Dispose of Waste & Recyclables (In Alphabetical Order)

・Combustible Waste (Burnable Waste)

・Incombustible Waste (Non-Burnable Waste)

	Item Name	品目名	Sorting Category	Tips for Disposal
K	Knives	包丁	Incombustible Waste	Wrap in paper, etc., before disposing. Partially wooden items are considered Bulky Waste.
L	Ladders	はしご	Incombustible Waste	
	Lamps	ランプ	Incombustible Waste	Remove fuel.
	Laundry poles	物干し竿	Bulky Waste	
	Lawn mowers	草刈り機	Bulky Waste	Household use items only. Remove all fuel.
	Lawn mowers (including motorized mowers) (household use items only)	芝刈り機 (電動式を含む) (家庭用に限定)	Bulky Waste	
	Leather backpacks (randoseru)	ランドセル	Bulky Waste	
	Leather, leather products	革製品、レザー製品	Incombustible Waste	Items larger than an 18 L plastic kerosene container are considered Bulky Waste.
	Legless chairs	座椅子	Bulky Waste	
	Light bulbs (fluorescent lights)	電球 (蛍光管)	Hazardous Waste	
	Lighters	ライター	Hazardous Waste	Empty of fluid before disposing.
	Lighting fixtures	照明器具	Incombustible Waste	Items larger than an 18 L plastic kerosene container are considered Bulky Waste. Put fluorescent lights out as Hazardous Waste.
	Liquor bottles	酒類のビン	Recyclables	Rinse the inside with water before disposing.
	Liquor cartons	酒パック	Recyclables	Items with foil lining are considered Incombustible Waste.
	Lockers (household use items only)	ロッカー (家庭で使用していたものに限る)	Bulky Waste	
	Low tables	座卓	Bulky Waste	
M	Magazines (single-volume, weekly, textbooks, etc.)	雑誌類 (単行本・週刊誌・教科書等)	Recyclables	Bundle together with string before disposing.
	Magnifying glasses	虫眼鏡	Incombustible Waste	
	Mahjong mats	麻雀マット	Incombustible Waste	
	Mahjong tiles	麻雀パイ	Incombustible Waste	
	Massagers	マッサージ機	Bulky Waste	Items smaller than an 18 L plastic kerosene container are considered Incombustible Waste.
	Mats for heated tables	こたつ敷き	Bulky Waste	
	Mattresses (without springs)	マットレス (スプリングなし)	Bulky Waste	Bring items with springs directly to the Bulky Waste Treatment Plant.
	Medical waste (from home medical care)	医療廃棄物 (自宅療養用)	×	Have a professional dispose of it.
	Medicine	薬	Incombustible Waste	
	Microphones	マイク	Incombustible Waste	Remove batteries.
	Microwave ovens	オーブンレンジ	Small Home Appliances	Put out on Bulky Waste day.
	Microwaves	電子レンジ	Bulky Waste	
	Milk cartons	牛乳パック	Recyclables	Cut open, rinse, and dry before disposing.
	Mini cars (toys)	ミニカー (おもちゃ)	Incombustible Waste	
	Mini component stereos	ミニコンボ	Bulky Waste	
	Mini light bulbs	豆電球	Incombustible Waste	
	MiniDisc players	MDプレーヤー	Small Home Appliances	Put out on Bulky Waste day.
	MiniDiscs (discs)	MD (盤)	Incombustible Waste	
	Mirrors	鏡	Incombustible Waste	Items larger than 50 cm are considered Bulky Waste.
	Mixers	ミキサー	Small Home Appliances	Put out on Bulky Waste day.
	Mobile phones (including chargers)	携帯電話 (充電器含む)	Small Home Appliances	Put out on Bulky Waste day.
	Mochi-making machines	餅つき機	Bulky Waste	
	Mops	モップ	Bulky Waste	
	Mortar	すり鉢	Incombustible Waste	

How to Dispose of Waste & Recyclables (In Alphabetical Order)

・Combustible Waste (Burnable Waste)

・Incombustible Waste (Non-Burnable Waste)

	Item Name	品目名	Sorting Category	Tips for Disposal
M	Mortars (for making mochi)	うす (餅つき用)	×	Have a disposal operator dispose of it.
	Mosquito nets	蚊帳 (かや)	Bulky Waste	Fold to a size of about 50 cm and tie together.
	Motorbikes	オートバイ	×	Consult a dealer or shop.
	Motorized bicycles	原動機付自転車	×	Have a retailer or professional dispose of it.
	Motors	モーター	×	Have a professional dispose of it.
	Music boxes	オルゴール	Incombustible Waste	
	Musical instruments (metal and plastic)	楽器 (金属製・プラスチック製)	Incombustible Waste	Items larger than an 18 L plastic kerosene container are considered Bulky Waste.
	Musical instruments (wooden)	楽器 (木製)	Bulky Waste	
N	Nail clippers	爪切り	Incombustible Waste	
	Nails	釘	Incombustible Waste	Wrap in the paper, etc., before disposing.
	Neckties	ネクタイ	Combustible Waste	Cut in half before disposing.
	Needles	針	Incombustible Waste	Cover the tip of the needle in tape.Wrap in paper, etc., so they do not scatter.
	Newspaper (including advertisements)	新聞紙 (折込広告含む)	Recyclables	Bundle together with string before disposing.
	Notebooks	ノート	Recyclables	Bundle together with string.
	Nukadoko (salted rice bran for pickling)	ぬか床	Combustible Waste	Drain water well.
O	Oil	オイル	×	Request drop-off at a store or dealer.If soaked into newspaper or rags or otherwise hardened, it can be put out with Combustible Waste.
	Oil (waste oil)/ Cooking oil (waste cooking oil)	油 (廃油)・ 食用油 (廃食用油)	×	Waste cooking oil can be brought to the Environment Division or the Bulky Waste Treatment Plant.
	Oil cans	油の缶	Incombustible Waste	Empty cans only.
	Oil heaters	オイルヒーター	Bulky Waste	Remove oil.
	Oil tanks (plastic tanks)	石油タンク (ポリタンク)	Incombustible Waste	Remove all kerosene.
	Organs (musical instrument)	オルガン	Bulky Waste	
P	Paint cans	塗料 (ペンキ) の缶	Incombustible Waste	Empty the contents. Items that still contain paint are to be disposed of by a professional.
	Pallets (for forklifts)	パレット (フォークリフト用)	×	Have a professional dispose of it.
	Pamphlets	パンフレット	Recyclables	Bundle it together with string.
	Panel heaters	パネルヒーター	×	Have a professional dispose of it.
	Paper cartons (milk cartons, drink cartons, etc.)	紙パック (牛乳パック、飲料用等)	Recyclables	Items with foil lining on the inside are considered Incombustible Waste.
	Paper lanterns	ちょうちん	Incombustible Waste	
	Paper sliding doors	障子	×	Have a professional dispose of it.
	Papier-mâché	紙粘土	Incombustible Waste	
	Parasols	パラソル傘	Bulky Waste	
	Partitions	ついたて	Bulky Waste	
	Party poppers (for parties, used)	クラッカー (パーティー用、使用済)	Combustible Waste	For unused items, have a professional dispose of it.
	Pedal sewing machines	足踏みミシン	×	Have a professional dispose of it.
	Pedometers	万歩計	Incombustible Waste	Remove the batteries.
	Pencil sharpeners	鉛筆削り器	Incombustible Waste	
	Pesticides	農薬	×	Have a professional dispose of it.
	Pestles (for making mochi)	きね (餅つき用)	Bulky Waste	
	PET bottles	ペットボトル	Incombustible Waste	
	Pet cages	ペットケージ	Bulky Waste	
	PET soy sauce bottles	醤油のペットボトル	Incombustible Waste	

M
N
O
P

How to Dispose of Waste & Recyclables (In Alphabetical Order)

・Combustible Waste (Burnable Waste)

・Incombustible Waste (Non-Burnable Waste)

	Item Name	品目名	Sorting Category	Tips for Disposal
P	Photo albums	アルバム	Incombustible Waste	
	Photographs	写真	Combustible Waste	
	Pianos (including electronic pianos)	ピアノ (電子ピアノ含む)	×	Have a professional dispose of it.
	Pickling barrels	漬け物樽	Incombustible Waste	Items larger than an 18 L plastic kerosene container are considered Bulky Waste.
	Pickling stones	漬け物石	×	Have a disposal operator dispose of it.
	Pillars for clothes drying rack	物干し台の支柱	Bulky Waste	
	Pillows	まくら	Incombustible Waste	
	Pinholders (for ikebana)	剣山	Incombustible Waste	
	Planters	プランター	Incombustible Waste	Remove dirt. Items larger than an 18 L plastic kerosene container are considered Bulky Waste.
	Plants & flowers	植木・草花	Combustible Waste	Tie together with string or place in a paper bag. Remove dirt.
	Plastic models	プラモデル	Incombustible Waste	
	Plastic products	プラスチック製品	Incombustible Waste	
	Plastic sauce containers	ソースのプラスチック容器	Incombustible Waste	
	Plastic tanks	ポリタンク	Incombustible Waste	
	Plastic wrap cores	ラップの芯	Recyclables	
	Pliers	ペンチ	Incombustible Waste	
	Plywood shelves	カラーボックス	Bulky Waste	
	Polystyrene foam	発砲スチロール	Incombustible Waste	
	Portable music players	ヘッドホンステレオ	Incombustible Waste	Remove batteries.
	Portable stereos	ラジカセ	Bulky Waste	Remove batteries.
	Portable toilets	ポータブルトイレ	Incombustible Waste	
	Portable TVs	ポータブルテレビ	×	This item falls under the Home Appliance Recycling Act.
	Postboxes/Mailboxes	ポスト・郵便受け	Incombustible Waste	
	Pots	鍋類	Incombustible Waste	
	Potty training toilets	おまる	Incombustible Waste	Rinse with water before disposing.
	Powdered baby formula cans	粉ミルクの缶	Recyclables	Rinse the inside with water before disposing.
	Printers (household use)	プリンター (家庭用に限る)	Bulky Waste	
R	Rackets (tennis, badminton, etc.)	ラケット (テニス、バドミントン等)	Incombustible Waste	Wooden items are considered Bulky Waste.
	Radio-controlled toys	ラジコン	Small Home Appliances	Remove batteries or fuel. Put out on Bulky Waste day.
	Radios (portable)	ラジオ (携帯用)	Small Home Appliances	Remove batteries. Put out on Bulky Waste day.
	Raincoats	レインコート	Incombustible Waste	
	Razors	ひげ剃り	Incombustible Waste	
	Record players	レコードプレーヤー	Bulky Waste	
	Records (discs)	レコード盤	Incombustible Waste	
	Reed screens	よしず	Bulky Waste	Tie together.
	Reels (for fishing)	リール (釣り具)	Incombustible Waste	
	Refrigerators/Freezers	冷蔵庫・冷凍庫	×	This item falls under the Home Appliance Recycling Act.
	Rice bins	米びつ	Bulky Waste	
	Rice cookers	炊飯器	Small Home Appliances	Put out on Bulky Waste day.
	Rice hullers (household use)	精米機 (家庭用)	Bulky Waste	
	Roller skates	ローラースケート	Incombustible Waste	
	Rolling walkers with seats	シルバーカー (手押し車)	Bulky Waste	Have a disposal operator dispose of it.

How to Dispose of Waste & Recyclables (In Alphabetical Order)

・Combustible Waste (Burnable Waste)

・Incombustible Waste (Non-Burnable Waste)

	Item Name	品目名	Sorting Category	Tips for Disposal
R	Roof tiles	瓦	×	Have a professional dispose of it.
	Rope	縄	Combustible Waste	Cut to lengths of about 50 cm before disposing.
	Rope (cloth)	ロープ (布製)	Combustible Waste	Cut to lengths of about 50 cm and place in a paper bag before disposing.
	Rope (plastic, metal)	ロープ (プラスチック、金属製)	Bulky Waste	Cut to lengths of about 50 cm and tie together.
	Rubber hoses	ゴムホース		Bundle with string before disposing.
	Rubber products	ゴム製品	Incombustible Waste	
	Rugs	じゅうたん	Bulky Waste	Tie it up as small as possible.
	Rush mats	ござ	Combustible Waste	Cut to a size of about 50 cm before disposing. Items larger than that are considered Bulky Waste.
S	Safes (carryable type)	金庫 (手提げ用)	Incombustible Waste	
	Safes (types other than carryable)	金庫 (手提げ用以外)	×	Have a professional dispose of it.
	Sand	砂	×	Have a professional dispose of it.
	Sandals	サンダル	Incombustible Waste	
	Saws	のこぎり	Incombustible Waste	Wrap the blade in paper, etc. Partially wooden items are considered Bulky Waste.
	Scales	はかり	Incombustible Waste	Items larger than an 18 L plastic kerosene container are considered Bulky Waste.
	Scales (for body weight)	体重計 (ヘルスメーター)	Incombustible Waste	
	Scales (for body weight)	ヘルスメーター (体重計)	Incombustible Waste	Remove batteries.
	Scissors	はさみ	Incombustible Waste	Cover the blade in paper or cloth. Pruning Shears (with wooden handles) are considered Bulky Waste.
	Screen doors	網戸	×	Have a professional dispose of it.
	Sewing machines (desktop)	ミシン (卓上式)	Bulky Waste	
	Sewing machines (with pedal)	ミシン (足踏み式)	×	Have a professional dispose of it.
	Shampoo containers	シャンプーの容器	Incombustible Waste	
	Shavers	カミソリ	Incombustible Waste	
	Shaving razors	カミソリの刃	Incombustible Waste	Wrap in the paper, etc., before disposing.
	Sheds	物置	×	Have a professional dispose of it.
	Shells	貝がら	Combustible Waste	
	Shoe storage boxes	下駄箱	Bulky Waste	
	Shoes, canvas shoes, slippers, sandals, etc.	靴、ズック、スリッパ、サンダル等	Incombustible	
	Shogi (board game) boards (wooden)	将棋板 (木製)	Combustible Waste	Put plastic items out with Incombustible Waste.
	Shredders (household use only)	シュレッダー (家庭用に限る)	Incombustible Waste	Items larger than an 18 L plastic kerosene container are considered Bulky Waste.
	Sickle	鎌	Incombustible Waste	Wrap the blade in paper or cloth when disposing.
	Sideboards	サイドボード	Incombustible Waste	Items larger than an 18 L plastic kerosene container are considered Bulky Waste.
	Sinks	流し台	×	Have a professional dispose of it.
	Skateboards	スケートボード	Incombustible Waste	Items larger than an 18 L plastic kerosene container are considered Bulky Waste.
	Ski carriers	スキーキャリア	Bulky Waste	
	Ski shoes, skating shoes	スキー靴、スケート靴	Incombustible Waste	
	Skis	スキー板	Bulky Waste	
	Skiwear	スキーウェア	Bulky Waste	
	Sleeping bags	寝袋	Bulky Waste	
	Slides (for infants)	すべり台 (幼児用)	Bulky Waste	
	Snowboards	スノーボード	Bulky Waste	
	Soap	せっけん	Incombustible Waste	

R
S

How to Dispose of Waste & Recyclables (In Alphabetical Order)

・Combustible Waste (Burnable Waste)

・Incombustible Waste (Non-Burnable Waste)

	Item Name	品目名	Sorting Category	Tips for Disposal
S	Sofa beds	ソファベッド	×	Bring directly to the Bulky Waste Treatment Plant.
	Sofa sets	応接セット	Bulky Waste	
	Sofas	ソファ	Bulky Waste	
	Soil	土	×	Have a disposal operator dispose of it.
	Soil scoops (household use)	スコップ (家庭用)	Bulky Waste	
	Solar panels	ソーラー	×	Have a professional dispose of it.
	Space heaters	温風ヒーター	Small Home Appliances	Be sure to remove all kerosene from heaters using kerosene. Put out on Bulky Waste day.
	Space heaters (electric, gas)	ストーブ (電気、石油)	Bulky Waste	Remove all fuel or batteries.
	Speakers	スピーカー	Incombustible Waste	Items larger than an 18 L plastic kerosene container are considered Bulky Waste.
	Spiked shoes	スパイクシューズ	Incombustible Waste	
	Sponges	スポンジ	Incombustible Waste	
	Spray cans	スプレー缶	Recyclables	Making holes is not necessary, but empty can of all its contents.
	Standing lamps	電気スタンド	Small Home Appliances	Put fluorescent bulbs out as Hazardous Waste. Put out on Bulky Waste day.
	Stationeries	文房具	Incombustible Waste	
	Stationery paper	便せん	Recyclables	
	Steel desks	スチール机	Bulky Waste	
	Stepladders (iron and aluminum)	脚立 (鉄・アルミ製)	Bulky Waste	
	Stereos	ステレオ	Bulky Waste	
	Stockings	ストッキング	Incombustible Waste	
	Stones	石	×	Have a disposal operator dispose of it.
	Storage cases	収納ケース	Incombustible Waste	Items larger than an 18 L plastic kerosene container are considered Bulky Waste.
	Straw floor mats (tatami)	畳	×	Have a professional dispose of it.
	Straws	ストロー	Incombustible Waste	
	Stuffed animals	ぬいぐるみ	Incombustible Waste	
	Suitcases	スーツケース	Bulky Waste	
	Surfboards	サーフボード	Bulky Waste	
	Swing sets (household use)	ブランコ (家庭用)	Bulky Waste	
T	Tables	テーブル	Bulky Waste	
	Tableware (not wooden)	食器 (木製以外)	Incombustible Waste	
	Tableware (wooden)	食器 (木製)	Combustible Waste	
	Tape measures	巻尺	Incombustible Waste	
	Tape measures	メジャー	Incombustible Waste	
	Taxidermy	はく製	Bulky Waste	
	Tea boxes	茶箱	Bulky Waste	
	Tea cabinets	茶ダンス	Bulky Waste	
	Tea containers	茶器	Incombustible Waste	
	Teacarts (for kitchen use)	ワゴン (キッチン用)	Bulky Waste	
	Teapots	急須	Incombustible Waste	Wrap broken items in the newspaper, etc.
	Telephone books	電話帳	Recyclables	
	Telephones	電話機	Small Home Appliances	Put out on Bulky Waste day.
	Telescopes	天体望遠鏡	Bulky Waste	
	Telescopes	望遠鏡	Incombustible Waste	

How to Dispose of Waste & Recyclables (In Alphabetical Order)

• Combustible Waste (Burnable Waste)

• Incombustible Waste (Non-Burnable Waste)

	Item Name	品目名	Sorting Category	Tips for Disposal
T	Television stands	テレビ台	Bulky Waste	
	Televisions (cathode tube, LCD, and plasma)	テレビ (ブラウン管・液晶・プラズマ含む)	×	This item falls under the Home Appliance Recycling Act.
	Tempura oil	天ぷら油	×	Bring directly to the Environmental Division/Bulky Waste Treatment Plant. (Applies to unused items as well)
	Tennis rackets	テニスラケット	Incombustible Waste	Partially wooden items are considered Bulky Waste.
	Tents	テント	Bulky Waste	
	Thermometers	体温計	Hazardous Waste	
	Thermometers (containing mercury)	温度計 (水銀を含むもの)	Hazardous Waste	
	Thermometers (not containing mercury)	温度計 (水銀を含まないもの)	Incombustible Waste	
	Thermos	ポット	Incombustible Waste	
	Tiles	タイル	×	Have a disposal operator dispose of it.
	Tire chains (metal, rubber, and plastic)	タイヤチェーン (金属・ゴム・プラスチック製)	Bulky Waste	
	Tires (including wheels)	タイヤ (ホイール含む)	×	Have a disposal operator dispose of it.
	Tissue boxes	ティッシュペーパーの箱	Recyclables	
	Tissue paper	ティッシュペーパー	Combustible Waste	
	Toaster ovens	オーブントースター	Small Home Appliances	Put out on Bulky Waste day.
	Toasters	トースター	Small Home Appliances	Put out on Bulky Waste day.
	Toilet seats (with heaters and bidets)	便座 (暖房機・洗浄器付)	Bulky Waste	
	Toilets	便器	×	Have a professional dispose of it.
	Tools	工具類	Incombustible Waste	Items larger than an 18 L plastic kerosene container are considered
	Towels and towel-fabric blankets	タオル・タオルケット	Recyclables	
	Toys (metal and plastic)	おもちゃ (金属・プラスチック製)	Incombustible Waste	Remove batteries.
	Toys (wooden)	おもちゃ (木製)	Combustible Waste	
	Tractors	耕運機	×	Have a retailer or professional dispose of it.
	Tractors	トラクター	×	Have a professional dispose of it.
	Transceivers	トランシーバー	Incombustible Waste	Remove batteries.
	Trays	トレイ	Incombustible Waste	
	Treadmills	ランニングマシン	Bulky Waste	
	Treadmills	ルームランナー	Bulky Waste	
	Tricycles	三輪車	Incombustible Waste	
	Tripods (for cameras)	三脚 (カメラ用)	Incombustible Waste	
	Trophies	トロフィー	Incombustible Waste	
	Trouser presses	ズボンプレス	Bulky Waste	
	Trunks (suitcase)	トランクケース	Bulky Waste	
U	Umbrellas	かさ	Incombustible Waste	
	Unicycle (for sports)	一輪車 (スポーツ用)	Bulky Waste	
	Unicycles (for transportation)	一輪車 (運搬用)	Bulky Waste	Remove the tire. (Have a professional dispose of the tire.)
V	Vacuum cleaners	掃除機	Bulky Waste	
	Vacuum flasks	魔法瓶	Incombustible Waste	
	Vanities	鏡台	Bulky Waste	
	Vaporizers	噴霧器	Bulky Waste	
	Vases	花瓶	Incombustible Waste	
	VCRs	ビデオデッキ	Small Home Appliances	Put out on Bulky Waste day.

T
U
V

How to Dispose of Waste & Recyclables (In Alphabetical Order)

・Combustible Waste (Burnable Waste)

・Incombustible Waste (Non-Burnable Waste)

	Item Name	品目名	Sorting Category	Tips for Disposal
V	Ventilation fans	換気扇	Incombustible Waste	Items larger than an 18 L plastic kerosene container are considered Bulky Waste.
	Video cameras	ビデオカメラ	Small Home Appliances	Put out on Bulky Waste day.
	Video game consoles	テレビゲーム機	Small Home Appliances	Remove batteries from battery-operated items. Put out on Bulky Waste day.
	Videotapes	ビデオテープ	Incombustible Waste	
	Vinyl sheets for farming	農業用ビニール	×	Have a professional dispose of it.
	Vinyl sheets (excluding for agricultural or commercial use)	ビニールシート (農業など業務用は除く)	Bulky Waste	Fold and tie together with string.
	Vinyl tubing	ビニールホース	Incombustible Waste	
W	Walkers	歩行器	Bulky Waste	
	Wallpaper	壁紙	×	Have a professional dispose of it.
	Wash basins	洗面器	Incombustible Waste	
	Washing machines	洗濯機	×	This item falls under the Home Appliance Recycling Act.
	Washstands	洗面台	×	Have a professional dispose of it.
	Waste oil (other than edible oils)	廃油類 (食品用以外)	×	Have a professional dispose of it.
	Water bottles	水筒	Incombustible Waste	
	Water heaters	給湯器	Bulky Waste	
	Water heaters	湯沸かし器	Bulky Waste	
	Water heaters (solar)	温水器 (ソーラー)	×	Consult a dealer.
	Water purifiers	浄水器	Small Home Appliances	Put out on Bulky Waste day.
	Water tanks	水槽	Incombustible Waste	Items larger than an 18 L plastic kerosene container are considered Bulky Waste.
	Welcome mats, scraper mats	玄関マット、泥落とし	Bulky Waste	
	Wheelchairs	車いす	Bulky Waste	
	Wire	針金	Incombustible Waste	Make bundles of about 50 cm in size.
	Woks	中華なべ	Incombustible Waste	
	Word processors	ワープロ	Bulky Waste	
	Woven mats (excluding agricultural or commercial use)	むしろ (農業など業務用は除く)	Bulky Waste	
	Wrapping paper	包装紙	Recyclables	

* For questions or more specific information, please contact the following locations directly.

Inquiries

◎About waste collection and waste sorting.....Environmental Division ☎(048)556-9530

◎About incombustible waste and bulky waste.....Bulky Waste Treatment Plant ☎(048)559-0278

◎About bringing in combustible Waste directly.....Kobari Clean Center ☎(048)559-3641